

7.0 CONSULTATION & COORDINATION

In addition to an extensive public involvement program, the following groups, agency representatives, and persons were involved with the development of the RMP/EA. The public involvement process and the planning group meetings are discussed in Chapters 1 and 2.

7.1 Parks Planning Team

Gary Buffington, Director & Project Manager, Larimer County Parks and Open Lands
K-Lynn Cameron, Open Lands Manager, Larimer County Parks and Open Lands
Mark Caughlan, Horsetooth District Manager, Larimer County Parks and Open Lands
Marc Engemoen, Public Works Director, Larimer County
Stan Gengler, Estes Valley Recreation and Park District
Vic Grizzle, Natural Resource Specialist, Bureau of Reclamation, Eastern Colorado Area Office
Tom Keith, Principal in Charge, EDAW, Inc.
Kara Lamb, Public Affairs, Bureau of Reclamation Eastern Colorado Area Office
Bruce Meighen, Project Manager, EDAW, Inc.
Dan Rieves, Blue Mountain District Manager, Larimer County Parks and Open Lands
Drew Stoll, Assistant Project Manager, EDAW, Inc.
Brian Werner, Northern Colorado Water Conservancy District
Debra Wykoff, Administrative Services Manager, Larimer County Parks and Open Lands

7.2 Parks Task Force

| | |
|-----------------------------------|-------------------------------------|
| Ivan Andrade | Rich Harter |
| Alan R. Apt | Linda Knowlton, Task Force Co-Chair |
| Ronny Bush | Chad LaChance |
| Frank Cada | Barry Lewis |
| David P.Coulson | Tom Miller |
| Andre C. Duvall, Task Force Chair | Peter Newman |
| Rob Harris | Kathay Rennels |

7.3 Federal, State, and Local Agencies

Ann Montoya, Education Coordinator, Larimer County Parks and Open Lands
Colorado Division of Wildlife
Colorado Natural Heritage Program
Colorado State Forest Service

Colorado State University Facilities Management
Colorado State University Research Foundation, Real Estate
Fort Collins Lands Conservation and Stewardship Board
Karen Mancini, Environmental Planner, Fort Collins Natural Areas Department
Fort Collins Natural Resource Advisory Board
Fort Collins Parks and Recreation Board
Fort Collins Water Department
Larimer County Commissioners
Larimer County Open Lands Board
Larimer County Planning Commission
Larimer County Sheriff's Department
Kathy Seiple, Superintendent, Lory State Park
Loveland Open Lands Committee
Patricia Brennan, Community and Volunteer Development, Larimer County Parks and Open Lands
Sue Burke, Public Affairs, Larimer County Parks and Open Lands
U.S. Geological Survey
Various Park Rangers, Larimer County Parks and Open Lands

7.4 Others Persons or Parties

Molly Cobbs, NEPA Coordinator, EDAW, Inc.
Phil Hendricks, Senior Landscape Architect, EDAW, Inc.
John MacFarlane, Retired Larimer Parks Director
Karen Mancini, Environmental Planner, Fort Collins Natural Areas Department
Greg Oakes, Landscape Architect, EDAW, Inc.
Chad Schneckenburger, Recreational Planner, EDAW, Inc.
Craig Severn, Ecologist, EDAW, Inc.

7.5 Stakeholder Groups Contacted for Participation

Audubon Society
Boy Scouts of America
Carter Lake Canoe and Kayak Rental, Inc.
Carter Lake Marina
Carter Lake Marina Customers
Carter Lake Sail Club and Members
Centennial Bass
Citizen Planners

Colorado Mountain Club
Colorado State University Crew Team
Colorado State University Outdoor Adventure Program
Colorado State University Sport Clubs
Colorado Walleye Association
Dennis Acott, South Bay neighbor
Diamond Peaks Mountain Bike Patrol
Estes Park Planning Commission
Estes Valley Land Trust
Inlet Bay and Field of Dreams homeowner/neighborhood association
Fort Collins Mountain Bike Association
Fort Collins Rowing Association, Inc.
Horsetooth Sail and Saddle Club / Horsetooth Recreation Corp.
Inlet Bay Marina
James Carrion, Bellvue Area Homeowners / CATCH
Ken and Ethel Ashley, Former Parks Board Chairman
Larimer County Horseman's Association
Poudre Canyon Sierra Club
Quarter Horse Association
Rock Climbing Coalition
Team BOB (Babes on Bikes)
The Cycologist
Tom and Carole Dougherty, Horsetooth Reservoir neighbor
Yann Ropars, Park user

APPENDIX A: REFERENCES

Anderson, G.D. (2006, June 12). *Potentilla ambigens* Greene (silkyleaf cinquefoil): a technical conservation assessment. [Online]. USDA Forest Service, Rocky Mountain Region. Available: <http://www.fs.fed.us/r2/projects/scp/assessments/potentillaambigens.pdf> [date of access].

Colorado Department of Labor Affairs (DOLA). 2006. Website available at: <http://www.dola.colorado.gov/dlg/demog/index.html>. Accessed November 2006.

CDOW 2006. State Sensitive Species List.

<http://www.co.nrcs.usda.gov/intranet/contracts/directives/bulletins/ecs/ThreatEndangerHabitatList.xls>

CDPHE. 2006. Status of Water Quality in Colorado – 2006. The Update to the 2002 and 2004 305(b) Reports Prepared by the Water Quality Control Division April 2006.

http://www.cdphe.state.co.us/op/wqcc/waterstatus_305_b/2006_305_b_AppdxC.pdf

Colorado Herpetological Society. 2006. Website <http://www.coloherp.org>. Accessed December 2006.

Colorado Natural Heritage Program (CNHP). 2004. Survey of Critical Biological Resources Larimer County, Colorado.

Colorado Natural Heritage Program. 2004. Survey of Critical Biological Resources Larimer County, Colorado. Colorado State University, Fort Collins, Colorado.

Colorado State Parks. 2003. Colorado's Outdoor Recreation Future: Strategies for Colorado's Outdoors Heritage. Statewide Comprehensive Outdoor Recreation Plan (SCORP), Finding and Strategic Actions Summary.

Colorado State Parks. 2006. Colorado State Parks website <http://parks.state.co.us/>.

Denver Regional Council of Governments (DRCOG). 2004. Economic Forecast.

EDAW. 1995. Environmental Assessment for the Resource Management Plans for Horsetooth Reservoir, Carter Lake, Flatiron Reservoir, and Pinewood Lake. Prepared for U.S. Bureau of Reclamation and Larimer County Parks Department.

EDAW. 1995. Resource Management Plan for Horsetooth Reservoir, Carter Lake, Flatiron Reservoir, and Pinewood Lake. Prepared for U.S. Bureau of Reclamation and Larimer County Parks Department.

Larimer County. 2005. Larimer County Parks and Open Lands Visitor Survey.

Larimer County. 2006. Larimer County Parks & Open Lands website <http://www.co.larimer.co.us/parks/>.

McDonald, D., N.M. Korfanta, and S.J. Lantz. (2004, September 14). The Burrowing Owl (*Athene cunicularia*): a technical conservation assessment. [Online]. USDA Forest Service, Rocky Mountain Region. Available: <http://www.fs.fed.us/r2/projects/scp/assessments/burrowingowl.pdf> [date of access].

Natural Diversity Information Source. Colorado Division of Wildlife, website available at: <http://ndis.nrel.colostate.edu/wildlife.asp> Accessed December 2006.

National Recreation Lakes Study Commission. 1999. Reservoirs of Opportunity.

NatureServe. 2006. NatureServe Explorer: An online encyclopedia of life [web application]. Version 6.0. NatureServe, Arlington, Virginia. Available <http://www.natureserve.org/explorer>. (Accessed: October 24, 2006).

NCWCD. 2006. Northern Colorado Water Conservancy District website <http://www.ncwcd.org/>.
<s/r2/projects/scp/assessments/yellowbilledcuckoo.pdf> [date of access].

North Front Range Municipal Planning Organization. 2006. Economic and Demographic Forecast for the NFR Modeling Area and its Sub-regions.

Sisneros, David. 2000. Integrated pest management plan for Carter Lake, Flatiron Reservoir, Horsetooth Reservoir, and Pinewood Lake. June 2000, updated December 2006 by Maxine Guill. Larimer County Parks and Open Lands, Northern Colorado Water Conservancy District, Bureau of Reclamation Loveland area office.

Stevens, M.R. 2003. Water Quality and Trend Analysis of Colorado–Big Thompson System Reservoirs and Related Conveyances, 1969 Through 2000 Prepared in cooperation with the Northern Colorado Water Conservancy District, Bureau of Reclamation, and the City of Fort Collins Water-Resources Investigations Report 03–4044.
<http://pubs.usgs.gov/wri/wri034044/#heading147475328>

Reclamation. 1990. National Environmental Policy Handbook. Denver, Colorado.

Reclamation. 1995. Resource Management Plan, Horsetooth Reservoir, Carter Lake, Flatiron Reservoir, and Pinewood Lake.

Reclamation. 1995. Environmental Assessment for the 1995 Resource Management Plan, Horsetooth Reservoir, Carter Lake, Flatiron Reservoir, and Pinewood Lake.

Reclamation. 1998. Office of Program and Policy Services, Denver Colorado, *Recreation Challenges of the 21st Century*.

Reclamation. 2000. Reclamation Policy Manual, Subject: Recreation Management, LND P04.

Reclamation. 2002. Concession Administration Information: Directives and Standards LND 04-02. First published 1998, amended 2002.

Reclamation. 2002. *Recreation Management Condition Assessment*, Clark Canyon Reservoir and Barretts Diversion Dam, Pick-Sloan Missouri Basin Project.

Reclamation. 2003. Resource Management Plan Guidebook: Planning for the Future.

Reclamation. April 2006. Reclamation Recreation Demand and Capacity Analysis: Horsetooth Reservoir, Carter Lake, Pinewood Lake, Flatiron Reservoir.

USFWS 2006a Larimer County Species List. <http://mountain-prairie.fws.gov/endspp/CountyLists/COLORADO.htm>

USFWS 2006b. Mountain-Prairie Region Endangered Species Program Preble's Meadow Jumping Mouse Fact Sheet http://mountain-prairie.fws.gov/preble/mouse_factsheet.htm

USFWS. 2006a. Larimer County Species List. <http://mountain-prairie.fws.gov/endspp/CountyLists/COLORADO.htm>

USGS. 2006. USGS Water data for Colorado. <http://nwis.waterdata.usgs.gov/co/nwis/nwis>
Wiggins, D. (2005, March 25). Yellow-billed Cuckoo (*Coccyzus americanus*): a technical conservation assessment. [Online]. USDA Forest Service, Rocky Mountain Region. Available: <http://www.fs.fed.us>

APPENDIX B:GLOSSARY

Accelerated Erosion - Erosion in excess of what is considered natural rates, often a result of human influence or activities.

Acre-foot - A measure of quantity consisting of one acre of water one foot deep; equals 43,560 cubic feet or 325,851 gallons.

Administrative Actions - The day-to-day actions necessary to serve the public and to provide for the management and use of the land and resources.

Annual Plant - A plant that lasts one growing season completes its life cycle from seed to seed in one year.

Aquatic - Living or growing in or on body of water.

Area of Critical Environmental Concern (ACEC) - An area within public lands that requires special management attention to protect and prevent irreparable damage to important historic, cultural, or scenic values; fish and wildlife resources; other natural systems or processes; or to protect life or provide safety from natural hazards.

Authorized Activity or Use - An activity or use of the reservoir area allowed or permitted pursuant to valid existing rights or pursuant to a right-of-use document issued by Reclamation or another agency within its jurisdiction.

Benefit/cost Ratio - A comparison of the beneficial value of an action to its cost of implementation. The higher the benefit to cost ratio, the more economically sound an action is considered.

Best Management Practices (BMPs) - Programs, practices, policies and procedures, and structures or activities which have been shown to be effective in management and protection of a given resource. This term is most often used in regard to water quality and soil protection.

Biological Pest Control - Use of organisms to control undesired plants and animals. Control organisms may include insects, predators, fungi, pheromone traps, release of sterilized populations, neutering, etc.

Bioturbation - The disturbance and/or mixing of soil or sediment by living organisms (i.e. plants and/or animals).

Carrying Capacity - Estimated amount of use or population that a given area can support without inducing unacceptable levels of damage to the area or its associated resources.

Chemical Pest Control - Use of chemicals to control undesired plants and animals. Chemicals include toxicants (e.g., pesticides, insecticides, herbicides), repellants, and fumigants.

Community - A group of plants and animals living in a specific region under relatively similar conditions.

Component - A part of a larger system or complex.

Concession - A non-Federal commercial business that supports public recreational uses and provides facilities, goods, or services for which revenues are collected. A concession generally involves use of the Federal estate and may involve the use or development of improvements.

Cover (soil) - Material covering soil and providing protection from or resistance to, impact of rain drops, expressed in percentage of area covered. Soil cover is composed of vegetation, litter, erosion pavement, and rock.

Cover (wildlife) - Vegetation or other materials serving to conceal wildlife from predators and/or protect wildlife from heat, cold, precipitation, and other weather conditions.

Critical Habitat - An area occupied by a threatened or endangered species “on which are found those physical and biological features (1) essential to the conservation of the species, and (2) which may require special management consideration or protection” (16 USC 1532 [5] [A] [I] 1988).

Crucial Habitat - Habitat on which a species depends for survival.

Cubic Feet per Second (CFS) - A measurement of water or stream flow. One cubic foot is 7.48 gallons; a flow of 1 cfs produces 448.8 gallons per minute.

Cultural Pest Control - Use of cultural practices to control pests. Cultural practices may include controlled burns, changes in grazing or irrigation practices, flooding, good housekeeping, removal of food sources, habitat modification, exclusion, etc.

Cultural Resources Management Plan (CRMP) - A written plan which identifies cultural resources related objectives, management actions, priorities for implementing those actions, and monitoring of the resources within a specific geographic area.

Cultural Resources - Those remains of human activity, occupation, or endeavor

reflected in districts, sites, structures, buildings, objects, artifacts, ruins, works of art, architecture, and natural features that were of importance in human events. These consist of (1) physical remains, (2) areas where significant human events occurred, even though evidence of the event no longer remains, and (3) the environment immediately surrounding the resources.

Degradation - 1) A process of transition from a higher to a lower quality; also, 2) The state or condition of being degraded.

Directives and Standards - A component of the Bureau of Reclamation Manual which provides the basic instructions and requirements for an action or process.

Diverse - Having variety. See also Diversity.

Diversity - Relative degree of abundance of wildlife species, plant species, ecological communities, habitats, or habit features per unit of area.

Earth Modifying Activities - Planned activities which change the form or character of the earth’s surface. These include such activities as plowing, leveling, excavation, and structure or facility construction.

Easement - An interest in land that gives the owner of the easement the right to use another person’s real property for a specific purpose.

Ecosystem - A community which includes all component organisms and associated environmental factors, and which forms an interacting system.

Egress - Act or right of coming out or leaving.

Emergent Vegetation - Vegetation that is rooted below the water surface and which extends above the water surface.

Endangered Species - Species that are in danger of extinction in all or a significant portion of their range. The Secretary of Interior makes the determination for federal listing.

Enhancement - The act of increasing or making greater, as in value or quality.

Erosion - The wearing away of the land surface by running water, wind, ice or other geologic agents, or resulting from human or animal activities.

Fire Management Plan - A site-specific plan for managing fire on a property. The plan should include risk assessment, suppression guidelines, partnerships, control measures, controlled burn guidelines, fuel management, and other fire management actions.

Geographic Information System (GIS) - A data management system with computer hardware and software functions for the input, storage, analysis, and output of mappable data and associated information.

Grassland - An area of grass or grass-like vegetation, such as a prairie or meadow.

Groundwater - Subsurface waters in a zone of saturation which are or can be brought to the surface of the ground or to surface waters through wells, springs, seeps, or other discharge areas. (from CDPHE Regulation #41)

Habitat - 1) Specific set of physical conditions that surround single species, groups of species, or a large community; 2)

Place or type of site in which an animal or plant naturally or normally occurs.

Heritage Resources - Property, plant, and equipment of historical, natural, educational, artistic, or architectural significance.

Historic Property - Cultural resources which are eligible to the National Register of Historic Property.

Hydrographic - Of or pertaining to the physical conditions, boundaries, flow and related characteristics of oceans, lakes, rivers, and other surface waters.

Hydrographic Regime - The systematic increases and decreases in the flow of surface water in an area, as affected by environmental factors.

Ingress - Act or right of going in or entering.

Integrated Management - The planning and implementation of a coordinated program utilizing a variety of methods for managing an area or resource to meet the objectives for that area or resource.

Integrated Pest Management - A coordinated program utilizing a broad range of methods to manage undesired animals and pests within an area. Methods may include education, preventive measures, good stewardship, and biological, cultural, chemical, and mechanical control.

Interagency Agreement - An agreement between two agencies which outlines the roles and responsibilities of the agencies in a collaborative action.

Jurisdictional Wetlands - A wetland area that meets the definitional requirements for wetlands as determined by the U.S. Army

Corps of Engineers (Corps). Wetlands, commonly recognized as bogs, swamps, and marshes, are often areas of transition between terrestrial and aquatic environments. Forested wetlands can contain both terrestrial and aquatic environments. Wetlands are generally distinguished by the seasonal or year-round presence of water, saturated soil types, and vegetation adapted to wet conditions. Therefore, these three characteristics must be recognized when determining whether an area is specified a jurisdictional wetland. The three criteria (hydrology, soils, and vegetation) for wetlands were initially established in 1977 by the Corps and later incorporated into the Corps' 1987 wetlands delineation manual. The burden of proof that an area is a jurisdictional wetland in need of regulation must rest with the Federal Government, based on a preponderance of evidence that a site meets all three wetlands criteria.

Land Use - Activities undertaken on a particular tract or parcel of land. Uses may include recreation, agriculture, livestock grazing, wildlife management, open space, rights-of-way, mining.

Leasable Minerals - Minerals such as coal, oil, and gas, and all other minerals which may be leased by the United States under the authority of the various Federal leasable mineral acts.

Locatable Minerals - 1) Minerals that may be acquired under the Mining Law of 1872, as amended; also, 2) In general, minerals that normally occur in veins, such as gold, lead, silver, molybdenum, etc.

Managerial Attributes (setting) - Managerial attributes are the features or characteristics of a recreation setting that may define and distinguish the recreation

experience. Management attributes may include facilities (e.g., ranging from water markers to full service marinas and campgrounds), rules, regulations, water operations, educational programs, fees and charges, interpretation, signage, law enforcement, design, lighting, concessions, and special use permittees.

Managing Entity or Partner - 1) A person, company, or agency which manages Reclamation lands and/or projects pursuant to a contract or agreement with Reclamation.

Mechanical Pest Control - Use of mechanical practices to control unwanted plants and animals. Mechanical practices include trapping (live and lethal), shooting, pulling, tilling, cracker shells, propane cannons, etc.

Mineral Materials - Common varieties of minerals such as sand, gravel, soil; also, sometimes referred to as "saleable minerals."

Mineral Right - 1) An interest in minerals in land, with or without ownership of the surface of the land; also, 2) A right to take minerals or a right to receive royalties.

Mitigation - 1) Avoiding or reducing possible adverse impacts to a resource by limiting the timing, location, or magnitude of an action and its implementation; 2) rectifying possible adverse impact by repairing, rehabilitating or restoring the affected environment or resource; 3) reducing or eliminating adverse impacts by preservation and maintenance operations during the life of an action.

Mitigation Measure - A measure or action taken to reduce the adverse impacts to the environment from implementation of a

project or another action. Such measures may include avoidance, replacement, restoration, relocation, timing of operations, etc.

Noise Sensitive Area (NSA) - An area that, because of its use by humans or special status wildlife species and the importance of reduced noise levels to such use, is designated for management which limits the noise level from long-term and/or continuous noise producing sources.

Noxious Weed - An alien plant that is invasive and undesirable and declared a noxious weed by the State or County and which generally meets one or more of the following criteria: a) aggressively invades or is physically damaging to economic crops or native plant communities; b) is detrimental to the environmentally sound management of natural or agricultural ecosystems; c) is poisonous to livestock; d) is a carrier of detrimental insects, diseases, or parasites.

Official Use Vehicle - Means a vehicle used by an employee, agent, or designated representative of the Federal government, with permission from the Bureau of Reclamation, for official purposes. This term includes employees of Reclamation's managing entities.

Overstory - The trees or shrubs which make up the canopy of a vegetative type.

Personal Watercraft (PWC) - A vessel which uses an inboard motor powering a water pump as its primary source of power; it is designed to be operated by a person sitting, standing, or kneeling on the vessel, rather than sitting or standing inside the vessel; some PWCs can carry as many as three seated people.

Physical attributes (setting) - Physical attributes are features or characteristics of a recreation setting that may help to define and distinguish the recreation experience. Physical attributes can be divided into natural features or built structures of a more permanent or fixed nature. Examples of natural resource attributes include water quality, aquatic and terrestrial vegetation, topography, shoreline curvature, fish and wildlife habitat, soil, natural soundscape, and air quality. Examples of built structures include all those municipal, commercial, industrial, residential, agricultural, and major recreation buildings and infrastructure common to any city or community (e.g., dams, water and power conveyances, water control structures, residential subdivisions, industrial complexes, commercial centers, air and ground transportation systems, developed resorts and marinas, theme parks, and shipping and cargo facilities).

Pioneers (plants) - Plants that are among the first to appear in an area that has been devoid of vegetation (e.g., the first plants to appear after a fire or on the newly exposed shore after the level of a reservoir drops). Many of these plants are often considered weeds.

Plan Adjustment - Changes to this plan to ensure that the plan is current, and covers the necessary resources and issues. Such changes may be minimal or substantial. Minimal changes would be made through plan maintenance, while substantial changes would be made through plan modifications.

Plan Amendment - A plan modification based on changes in circumstances or conditions affecting the scope, terms, or conditions of this plan, particularly for a proposed action which does not conform to this plan, but which warrants further consideration prior to a scheduled revision.

Generally an amendment only involves one or two issues.

Plan Maintenance - Activities taken to maintain and update this plan without changing its scope or intent or affecting the basic decisions, terms and conditions, use levels, or restrictions contained therein. Such activities may include posting new information, refining analyses, and making minor changes in management actions.

Plan Modification - Activities taken to maintain and update this plan which would change its scope or intent; or affect the basic decisions, terms and conditions, use levels, or restrictions contained therein.

Plan Monitoring - A system or process of reviews to ensure implementation of the plan, to track the effectiveness of planned management actions and standards and guidelines, to provide additional information, and to track the long-term management of the area.

Plan Revision - A plan modification based on this plan becoming outdated or otherwise obsolete and which involves the completion of a new RMP.

Prescribed Burn - A planned vegetative manipulation using fire to meet certain resource management objectives. The fire is ignited and managed so as to control its intensity and spread.

Primary Jurisdiction Area (PJA) - The area surrounding the dam, outlet works and distribution works, wherein the Reclamation retains primary jurisdiction for the protection, operation, and maintenance of said project facilities.

Private Exclusive Use - Exclusive use is any use which excludes other appropriate

public recreational use or users for extended periods of time, including concessionaire-permitted sites on which dwellings or improvements are privately owned, such as a cabin, trailer, or mobile home. Exclusive use occurs when there is not: (1) An established process that frequently rotates users of sites (2) A process which accommodates changes in use, including a process for determining and accommodating other desired uses and resource values

Project Facilities - The water diversion, collection, storage, and carriage facilities, and appurtenant ancillary facilities built by Reclamation or its managing entity under the project authorizing act(s) to fulfill the primary purposes of those acts.

Project Lands - Lands and interests in land acquired, withdrawn or otherwise reserved for Reclamation project purposes, and administered for such purposes by Reclamation.

Project Purposes - Those purposes for which a Reclamation project was authorized, as specified in the applicable Reclamation law or laws.

Public Land - 1) Vacant, unappropriated and unreserved lands which have never left Federal ownership (e.g., public domain); also, 2) Federal lands administered by BLM, also, 3) all lands under the custody and control of the Secretary of Interior and the Secretary of Agriculture, except Indian lands (from EO #11644- Use of off-road vehicles on the public lands), also 3) (in broadest sense) lands owned by the Federal, State, or local governments, as opposed to private ownership.

Real Property - 1) Land and generally whatever is erected or growing upon, or affixed to land; also, 2) Rights issuing out

of, annexed to, and exercisable within or about land. These include the land and interests in land, such as, mineral rights, water rights, right-of-way, permits, structures, and buildings.

Reclamation - 1) The process of converting disturbed land to its former use or other productive uses (from FFO 2003 PRMP/FEIS); 2) the Bureau of Reclamation

Reclamation Lands - Lands and land interests under the custody and control of the Commissioner, US Bureau of Reclamation.

Recreation Activity - Recreation activity is a leisure-time pursuit that a person participates in voluntarily to secure a pleasurable experience.

Recreation Benefits- Recreation benefits are the positive gains or improvements made by people participating in recreation opportunities. The gains may include benefits for the individual, community, economy, or environment.

Recreation Diversity - Recreation diversity is the type, variety, distribution, quality, and abundance of outdoor recreation opportunities. Diversity is accommodated through management of a spectrum of recreation opportunity classes, zones, or units named in WROS as urban, suburban, rural developed, rural natural, semi-primitive, and primitive.

Recreation Experience - Recreation experience is the psychological and physiological response to participating in a particular recreation activity in a specific recreation setting. Recreationists consume a recreation experience (activity + setting = experience).

Recreation Facilities - Those facilities constructed or installed for public recreational use or for support of such use. These facilities may include, but are not limited to, buildings and other structures (such as park headquarters, visitor centers, maintenance shops, shelters, kiosks, etc.) campgrounds, picnic grounds, boat docks and ramps, electrical lines, water systems, roads, parking areas, sewer systems, signs, trash facilities, boundary and interior fencing, etc.

Recreation Opportunity - Recreation opportunity is the opportunity for a person to participate in a particular activity in a specific setting to realize a particular type of experience and subsequent benefits.

Recreation Setting - Recreation setting is a geographic location composed of physical, social, and managerial attributes where a person participates in a particular activity to have a specific type of recreation experience. Managers manage the recreation setting.

Reservoir Area - In general, those lands and land interests underlying and surrounding a reservoir basin which were withdrawn or acquired by Reclamation for project purposes and which are retained under Reclamation's jurisdiction.

Reservoir Basin - That portion of the reservoir area contained below the normal high water line of a reservoir.

Resource Management Plan (RMP) - A written document that addresses the existing resources of an area and provides future objectives, goals, and management direction.

Right-of-Way - 1) The right to pass over property owned by another party; also, 2)

The strip of land over which facilities, such as highways, railroads, power lines, etc. are built.

Rights-of-Use - Land or resource uses issued or granted, according to law, by the appropriate entity on, over, across a given parcel. Such uses may be authorized by permit, grant, permit, license or other documents.

Riparian Area or Zone - Land areas adjacent to streams, lakes, or other bodies of water where the vegetation present is dependent on the water table of that water body.

Riparian Habitat - Habitat associated with a riparian zone. Includes both terrestrial (land based) and aquatic (water based) habitat.

Road - A vehicle route which has been improved and maintained by mechanical means to insure relatively regular and continuous use.

Saleable Minerals - 1) Common forms of minerals such as sand, gravel, soil, etc., which may be sold under the various authorities of the United States; also sometimes referred to as “mineral materials.”

Seasonal Closure - A seasonal restriction stipulation that prohibits surface use during specified time periods to protect identified resource values.

Sedimentation - The act or process of depositing soil particles which are suspended in water.

Sensitive Species - A plant or animal species, subspecies, or variety for which a Federal or State agency has determined there

is a concern for the species viability, as evidenced by a significant current or predicted downward trend in the population or habitat.

Setbacks - The distance activities that pose a potential threat to the environment must be separated from the feature they threaten (e.g., the proper linear distance that an oil well must be from a flowing stream).

Shrubland - An area of vegetation where shrubs or bushes are the dominate plants present.

Small Game - Those wildlife species defined as small game by the respective State fish and wildlife agencies. They include small game birds, small game mammals, and other small game.

Social Attributes (setting) - Social attributes are the features or characteristics of a recreation setting that may define and distinguish the recreation experience. Social attributes may include such features as (1) recreation use and users (e.g., the type, amount, time, location, distribution, origin, behaviors, and quality), (2) non-recreation use and users (e.g., business people, educational groups, agency personnel, scientists, farmers and ranchers, and local residents), and (3) special values associated with the cultural, historical, and spiritual or religious significance.

Sociodemographics - Descriptive statistics (means, medians, modes, ranges, etc.) relating the characteristics of a particular population. Population characteristics may focus on a wide range of measures but often include population size, employment by density, unemployment rates, average income and percent of population below poverty level, education, racial background, average age, percent by gender, etc.

Special Management Area (SMA) - An area that has special resource values and where some uses may be restricted in order to protect those resources.

Species of Concern - Taxa for which further biological research and field study are needed to resolve their conservation status (USFWS).

Standards and Guides - Written instructions prepared by Federal and State agencies outlining how work is to be accomplished and actions that need to be taken.

Suitable Recreation Acres - Suitable recreation acres are those acres within a project or planning area that can or will accommodate some type and level of recreation use. Unsuitable recreation acres may be those acres that include security closures, pose public safety hazards, contain sensitive wildlife habitat or heritage sites, have incompatible industrial activity, or are inaccessible because of topography or private land.

Surface Water - Water, whether flowing or standing, which is present at the ground's surface (as opposed to ground water).

Threatened Species - A plant or animal species, subspecies or variety that is not currently in danger of extinction, but is likely to be in the foreseeable future. The Secretary of Interior makes this determination for federal listing.

Unauthorized Use - Use of land or associated resources which is not permitted or otherwise allowed by virtue of applicable grants, conveyances, deeds, reservations, licenses, and/or permits etc.

Understory - Plants growing beneath a canopy of other plants; usually refers to grasses, forbs, and low shrubs under a tree or brush canopy.

Useful Life - The expected or actual life, whichever is shorter, of a capital improvement consistent with proper maintenance, or the primary term of the existing permit on the property on which the improvement was constructed, whichever period of time is shorter. (Colorado definition from CDOW/CDPOR MOU, 1976)

Valid Existing Right (VER) - A documented, legal right or interest in the land which allows a person or entity to use said land for a specific purpose. Such rights include fee title ownership, mineral rights, rights-of-way, easements, permits, licenses, etc. Such rights may have been reserved, acquired, leased, granted, permitted, or otherwise authorized over time.

Valid Existing Use - A use of land based on a valid existing right.

Vegetative Community - 1) Plant association with immediately distinguishable characteristics based upon and named after apparent dominant plant species (e.g. grassland, shrubland, woodland, forest, etc.); also, 2) Vegetative type.

Vegetative Composition - The various species of plants present in an area, their age, and their relative arrangement within a vegetative community.

Vegetative Condition - The particular state of being of a plant, a plant population, or a plant community. This includes such elements as vigor, general abundance, amount of use, etc.

Visitor (recreation) Capacity - Visitor capacity is the supply, or prescribed number, of recreation opportunities that can be accommodated in a particular area.

Water Resources - Water resources is the term used in this guidebook to refer to the types of water resources to which WROS can be applied, including lakes, reservoirs, wetlands, bays, estuaries, rivers, coastal zones, and marine protected areas.

Water Right - A legal right to use available water for general or specific purposes, such as irrigation, mining, power, or domestic use, either to its full capacity or to a measured extent or during a defined portion of time.

Waterfowl - Swimming birds often associated with freshwater. This term includes all species of ducks, mergansers, geese, and brant.

Wetland - An area that is inundated or saturated by surface or groundwater at a frequency and duration sufficient to support, and that under normal circumstances do support, a prevalence of vegetation typically adapted for life in saturated soil conditions. Wetlands generally include swamps, marshes, bogs, and similar areas. See also Jurisdictional Wetland.

Wildlife - Animals living in a natural, undomesticated state.

Wildlife Habitat - 1) The arrangement of food, water, cover, and space needed for the survival of wildlife. (CDOW)

Winter Range - Area occupied by animal species during winter.

Woodland - Land having a cover of trees and shrubs of such nature that the woody vegetation is not generally valuable for timber.

WROS Classes, Areas, or Zones - WROS is a system of six classes of recreation opportunities ranging from urban to primitive. The word class refers to the narrative description of the six classes in this guidebook. When a body of water is mapped or delineated as belonging to one or more WROS classes, they are called WROS

APPENDIX C: PUBLIC WORKSHOPS & INTERVIEWS REPORT

This document summarizes the results of workshops held in September. The comments recorded about the proposed opportunities can be reviewed under the “Workshop Comments” column. Additional comments that were mailed in have been included in this document. All public comments will be considered in selecting the final opportunities (alternatives). If you would like to comment on the contents of this document, please do so through the project webpage at: <http://www.larimer.org/parks/masterplan/>.

September Public Workshop Summary Table

| Workshop | Date | Location | Participants | Number of Participants | Format |
|------------------|----------|--------------|---|------------------------|-------------------------------------|
| Planning Team | Sept. 12 | Fort Collins | Parks Staff, Reclamation, EDAW | 11 | Meeting |
| Parks Task Force | Sept. 12 | Fort Collins | Task Force & Planning Team | 22 | Meeting & Small Group Discussion |
| Public | Sept. 13 | Loveland | Public, Task Force, Planning Team, Volunteers | 36 Public | Open House & Small Group Discussion |
| Public | Sept. 14 | Fort Collins | Public, Task Force, Planning Team, Volunteers | 35 Public | Open House & Small Group Discussion |

Note: A list of Planning Team and Task Force members can be reviewed in Chapter 7.0.

MAJOR MASTER PLAN OPPORTUNITIES

| Major Master Plan Opportunities | Justification/ Discussion | Upgrade/ New 1995 RMP | Workshop Comments |
|--|---|-----------------------|---|
| Create a location to share information and interpret the parks (shared facility, virtual visitor center, outdoor event area). | Provide education, information, event location, and public relations. | 1995 RMP (p. 3-37) | Planning Team: <ul style="list-style-type: none"> ▪ A place to get message out ▪ Virtual vs. building? ▪ Joint facility with other organizations? ▪ Other websites – state/private ▪ Landscape with interpretation, facility not a building? |
| Provide more interpretation infrastructure and programs such as kiosks, amphitheaters, interpretive trails, etc. | | New | |
| Expand the park system by continuing to seek opportunities to acquire and manage new parks based on a set of criteria (cost benefit), such as Hermit Park in Estes Park, Lon Hagler and Watson Lake State Wildlife Areas | Expand recreation opportunities; keep public lands open, management efficiency. | New | Planning Team: <ul style="list-style-type: none"> ▪ If other public lands may have public access closed, it may be appropriate to manage them as County Parks ▪ Diversity experience ▪ Change of character – efficiency ▪ Define criteria to make these decisions |
| Seek an organization to maintain Bingham Hill Overlook Park. | The Bellvue Historic Society has been mentioned for this role. | Upgrade | |

| Major Master Plan Opportunities | Justification/ Discussion | Upgrade/ New 1995 RMP | Workshop Comments |
|--|---|-----------------------------|---|
| Transfer the Strange and Strauss Cabin properties to the City of Fort Collins for their management. | These are small sites the County is not set up to manage well. | Upgrade | <ul style="list-style-type: none"> There is currently gravel extraction on the Strange site. |
| Limit exclusive uses of the parks. | Groups should provide public access to facilities and programs. | | |
| Should LC POL funding be reconsidered to relieve 95% funding source user-driven so development is not such a factor? | | Added at public workshop | |

Note: 1995 RMP = opportunity called for in the 1995 Plan

Other mailed-in public comments about Larimer County Parks

- Stop exclusive groups using County lands
- Charge out-of-County park visitors 3-4 times more than residents
- Greatly increase boating fees for out-of-County residents. This would raise more money and reduce overcrowding (Horsetooth & Carter especially)
- Keep Horsetooth Mountain Park a fee area – don't make it an open space
- Thank you for all you do in the County
- Include in goals and policies: "Respect existing & long-term park neighbors quality of life – do no harm"
- Day passes should be charged, but why can't sea-kayaking be free?
- The Larimer paddling permit, plus the various problems that the season permit poses for a family that has multiple users entering parks without a vehicle are things I'd love to see resolved at some point.
- I am a senior citizen who is also disabled and I am slowly but surely being priced out of using the County Parks
- A combined, discounted Horsetooth/Lory pass might increase total revenue (sales) and at the same time make park usage more affordable for those who want to visit both places.

MAJOR HORSETOOTH RESERVOIR OPPORTUNITIES

| Map # | Major Horsetooth Reservoir Opportunities | Justification/ Discussion | Upgrade/ New/ 1995 RMP | Workshop Comments |
|-----------------------|--|------------------------------|------------------------------|--|
| INLET BAY AREA | | | | |
| 1a | Build a camper services building with showers, restrooms, vending machines and laundry facilities. | Improve visitor experience. | 1995 RMP (p. 3-35, 3-36) | Planning Team: <ul style="list-style-type: none"> Utilities Good idea Solar lighting Self-sufficient? Public Workshop: <ul style="list-style-type: none"> Could include small non-motor boat storage? Focus use to serve visitors Will this bring more congestion |

| Map # | Major Horsetooth Reservoir Opportunities | Justification/ Discussion | Upgrade/ New/ 1995 RMP | Workshop Comments |
|------------------|---|---|------------------------|---|
| | | | | to congested area? <ul style="list-style-type: none"> Inlet Bay seems odd location See 2 & 4b |
| 1b | Create a day use area and small play area with picnic tables, volleyball, horseshoes, and playground equipment. | Improve visitor experience. | New | Task Force: <ul style="list-style-type: none"> Having it near the marina may not be close enough to either campground Public Workshop: <ul style="list-style-type: none"> Does a playground take away from the desired experience? Maybe more naturalized type of play area |
| SOUTH BAY | | | | |
| 2 | Improve the swim beach area with a new restroom away from the shoreline, shade and picnic tables adjacent to the beach, and more lawn in the picnic area. | Improve visitor experience. | 1995 RMP (p. 3-37) | Planning Team: <ul style="list-style-type: none"> Add group use area Keep group use to one area Public Workshop: <ul style="list-style-type: none"> Seems better location -> more diverse use, camping, etc. Could be too far from some campgrounds See 1a & 4b |
| 3 | Build an event center/ group use building for reunions, special events, and training. | Meet demand for a reunion facility in a natural and recreational setting. | New | Planning Team: <ul style="list-style-type: none"> Cost prohibitive? Already busy area Provide food services Public Workshop: <ul style="list-style-type: none"> 2-story building would cause a visual impact, matching colors better or logs – blend w/atmosphere Concern about light pollution Concerns about costs Priority system favoring County residents |
| 4a | Rebuild the maintenance and office buildings and yard. | Improve safety, appearance, and efficiency. | Upgrade | Public Workshop: <ul style="list-style-type: none"> Support this Visually appealing & energy efficient, stay true to environment/atmosphere Is that your best location? |
| 4b | Build a camper services building with showers, restrooms, vending machines and laundry facilities. | Improve visitor experience. | New | Planning Team: <ul style="list-style-type: none"> Location Public Workshop: <ul style="list-style-type: none"> See 2 & 1a |
| 4c | Upgrade the group day use area and facilities. | Improve visitor experience. | 1995 RMP (p. 3-37) | Public Workshop: <ul style="list-style-type: none"> Provide a group campground More trees |

| Map # | Major Horsetooth Reservoir Opportunities | Justification/ Discussion | Upgrade/ New/ 1995 RMP | Workshop Comments |
|-----------------------------|---|---|------------------------|---|
| 4d | Rebuild the southwest camping area to create campsites with full hookups, improved materials, and more space. | Improve visitor experience. | 1995 RMP (p. 3-37) | <p>Planning Team:</p> <ul style="list-style-type: none"> ▪ Higher prices for premium sites ▪ Good idea ▪ Dredge the shoreline area to create more campsites <p>Public Workshop:</p> <ul style="list-style-type: none"> ▪ What is the demand for full hookups? ▪ Does ecosystem need recovery time? ▪ Environmental impacts from additional amenities (sewer, water, etc.)? ▪ Is it economically feasible to build out for trends or peak times – socio- economic impacts? |
| 4e | Build more campsites and cabins. | Meet demand for more campsites. South Bay may already be fully developed. | Upgrade | <p>Planning Team:</p> <ul style="list-style-type: none"> ▪ Create zoning within campground to assure the right experiences ▪ Build tent sites near Lory State Park <p>Public Workshop:</p> <ul style="list-style-type: none"> ▪ Is it economically feasible to build out for trends or peak times – socio- economic impacts? |
| SAIL AND SADDLE CLUB | | | | |
| 5 | Address expanded clubhouse use as part of a separate permit process. | | | <p>Planning Team:</p> <ul style="list-style-type: none"> ▪ Discourage exclusive use ▪ Reasonable public access ▪ Public use is limited and should be expanded ▪ Address as a separate process <p>Public Workshop:</p> <ul style="list-style-type: none"> ▪ Open shoreline use to the public ▪ There is limited space (20 families) ▪ Expand users –> rowing club, schools, etc. ▪ Renegotiate permit so equal funds of some sort go to more community benefits ▪ Club does bring some community benefits ▪ This is an alternative to the marina ▪ Insurance is an issue for building use ▪ Has a small sanitation & water system –> needs improvement |

| Map # | Major Horsetooth Reservoir Opportunities | Justification/ Discussion | Upgrade/ New/ 1995 RMP | Workshop Comments |
|---------------------------------|---|--|------------------------|--|
| | | | | <ul style="list-style-type: none"> Improve road access |
| ROTARY PARK DAY USE AREA | | | | |
| 6 | Improve a trail to climbing areas and the shoreline. | Reduce resource impacts and improve visitor experience. | Upgrade | Public Workshop: <ul style="list-style-type: none"> Trail improvements to rotary ok, but maybe also Duncan's & Torture Chamber |
| SUNRISE DAY USE AREA | | | | |
| 7 | Convert Upper Sunrise to a group day use area that could be used by the public when it is not reserved. | Meet demand for group day use facilities. This may serve as an overflow parking area for a new swim beach. | Upgrade | Public Workshop: <ul style="list-style-type: none"> Support for this |
| 8 | Build a new swim beach to expand and improve access to beach recreation. This area could also be used for rowing, kayaking, and scuba diving activities. The beach area would need shelters, toilets, storage building, parking, and a trail to the Sunrise overlook area | Meet demand for beach recreation on the east shore of the reservoir. | 1995 RMP (p. 3-37) | Planning Team: <ul style="list-style-type: none"> How would rowing fit here? Is rowing an exclusive use? Great idea Need more beach area Provide a dog beach somewhere Task Force: <ul style="list-style-type: none"> Would like to see a permanent building erected for CSU/Fort Collins rowing club Make this facility more multi-use – rowing club, scuba, wind surf, kayak, non-motorized use Make it environmentally-friendly Serve as a community gathering area, support liquor license, events, etc. Restoration program Should be self-funded This would increase County revenue through annual permits Public Workshop: <ul style="list-style-type: none"> This is a good idea This site is currently used by rowing club, scuba divers If swim beach is created, current users should be allowed another site on the reservoir Would prefer some contouring to create a cove-like swimming experience Like the compatible use ideas, diversity, and non-motorized sports Like the additional support for County residents |

| Map # | Major Horsetooth Reservoir Opportunities | Justification/ Discussion | Upgrade/ New/ 1995 RMP | Workshop Comments |
|--------------------------------|---|--|--------------------------|---|
| SATANKA COVE | | | | |
| 9 | Create a trail from Reservoir Ridge Natural Area to Satanka Cove and Lory State Park. | Improve access to the park and regional trails. The terrain is steep in this area. | 1995 RMP (see map) | Public Workshop: <ul style="list-style-type: none"> Support this – better access Address road safety, especially across the dam |
| WEST SHORELINE CAMPING | | | | |
| 10 | Install floating campsites in the coves. Toilets would be built on land for camping and boat use. | Reduce resource impacts and improve visitor experience. These facilities would change experience in the coves. | Upgrade | Public Workshop: <ul style="list-style-type: none"> Coves already sustain a lot of degradation, erosion, waste (humans & others) This could make it worse What about increased noise pollution/enforcement Increase # of campers = more damage & change of experience What are camping capacities – minimum & maximum? Could structures be temporary? Safety issues, monitoring of who rents & how Change in use atmosphere Support from boaters |
| FIELD OF DREAMS | | | | |
| 11 | Develop a trailhead for the Blue Sky Trail that also serves as a local play area. | Improve access to the trail and provide a passive recreation opportunity. | New | Planning Team: <ul style="list-style-type: none"> Good idea Soderberg parking lot requires fees to use the free Blue Sky Trail Make sure access is safe Public Workshop: <ul style="list-style-type: none"> Great idea Concern about parking lot size Some of the lawn would become parking lot Would the parking lot be multi-use? fisherman, kayakers, etc, horse trailers Support to create this access |
| NORTH OF HORSETOOTH DAM | | | | |
| 12 | Archery Range. | | Added at public workshop | Public Workshop: <ul style="list-style-type: none"> Develop 3-D range |
| 12 | Or Bicycle-Cross (non-motorized) and Picnic Area. Short Track Mountain Bike Course. | | Added at public workshop | Public Workshop: <ul style="list-style-type: none"> This option would most likely gain more support from neighbors |
| 12 | Or Official Cross-Country Running Course. | | Added at public workshop | Public Workshop: <ul style="list-style-type: none"> Trails designed for cross-country running |

| Map # | Major Horsetooth Reservoir Opportunities | Justification/ Discussion | Upgrade/ New/ 1995 RMP | Workshop Comments |
|-------|---|---------------------------|--------------------------|--|
| | | | | <ul style="list-style-type: none"> This option would most likely gain more support from neighbors |
| 13 | Rowing Club. | | Added at public workshop | Public Workshop: <ul style="list-style-type: none"> Non-motorized boat area, north end/Satanka, certain days or times Storage area would be nice/shelters Community benefits, outreach Family alternative for activity Shared-use facility – > share w/sail & saddle or something new, other reservoir sites? Incorporate into new swim beach Launching area – temporary docks Prefer NE access |
| 14 | Provide more interpretive displays / information. | | Added at public workshop | |
| | Address water quality. | Spills, etc. | Added at public workshop | |

Mailed Public Comments

- Screening parking lights, limiting light intrusion, etc. are important.
- Provide a public use restaurant/overlook for the reservoir.
- Provide equal facilities for non-motorized boats (storage).
- Provide an indoor/outdoor rental facility for reunions, weddings, etc. that is large enough to accommodate 150-200 people.
- Providing fully equipped cabins would also be nice to provide opportunities for year-round use of the reservoir, or to provide families who may have various "camping" needs to accommodate everyone.
- I do find it unfortunate that the on-street biking is not addressed. As traffic to the reservoir increases, there are going to be more conflicts in a limited space. Some type of paved trail for bicyclists would be nice so accidents could be avoided.
- Provide a non-motorized boat launch site.
- Power boat users of Horsetooth Reservoir should pay a higher premium, since they dominate the reservoir so thoroughly as to discourage other (fee-paying) users.

MAJOR CARTER LAKE OPPORTUNITIES

| Map # | Major Carter Lake Opportunities | Justification/ Discussion | Upgrade/ New/ 1995 RMP | Workshop Comments |
|-------------------------------------|--|---|------------------------|---|
| SAIL CLUB AND WEST BOAT RAMP | | | | |
| 1 | Address expanded Sail Clubhouse use as part of a separate permit process. | Limit exclusive use of facilities in parks. | | Task Force: <ul style="list-style-type: none"> ▪ Move to generic statement ▪ Contractual issue during renewal ▪ Let it go to the end of the contract Public Workshop: <ul style="list-style-type: none"> ▪ Clarify what is defined in the documents for dealing with definitions of exclusive use ▪ Rising membership dues ▪ Public accessibility to clubhouse |
| NORTH PINES | | | | |
| 2 | Redesign the campground to create a better camping experience, provide more campsites or cabins, and new restroom. | Improve visitor experience. | Upgrade | Task Force: <ul style="list-style-type: none"> ▪ Possible location for group camping ▪ Provide cabins in north cul-de-sac area Public Workshop: <ul style="list-style-type: none"> ▪ Replace north vault restroom ▪ Provide dingy/ boat storage in parking lot – revenue generation ▪ Group camping overflow for special events – parking lot ▪ Provide new restrooms |
| EAGLE CAMPGROUND | | | | |
| 3 | Build additional RV campsites. | Meet demand for more campsites. This would impact some natural habitat. | New | Task Force: <ul style="list-style-type: none"> ▪ Keep camping on one side of the road ▪ Use to relocate displaced campsites at Lowell's campground due to marina rebuild Public Workshop: <ul style="list-style-type: none"> ▪ Neighbor concerned about additional noise/view ▪ RV sites don't push out tent campers – quality-larger sites ▪ Still need overflow parking for summertime and storage for docks in the winter |
| 4 | Build a camper services building with showers, restrooms, vending machines and laundry facilities. | Improve visitor experience. | New | Task Force: <ul style="list-style-type: none"> ▪ Pay showers or could be managed by a concessionaire Public Workshop: <ul style="list-style-type: none"> ▪ There is demand for showers – this is a good thing ▪ Will campsites near services building cost more? ▪ Are showers a concessions |

| Map # | Major Carter Lake Opportunities | Justification/ Discussion | Upgrade/ New/ 1995 RMP | Workshop Comments |
|-----------------------------------|---|---|------------------------------------|--|
| | | | | issue? <ul style="list-style-type: none"> What criteria do you use to evaluate what type of concessions you have? |
| LOWELL'S CAMPGROUND | | | | |
| 5 | Build visitor cabins. | | New | Task Force: <ul style="list-style-type: none"> Have all campsites on same side of the road Mailed Public Comment: <ul style="list-style-type: none"> Noise and activity generated by existing camping areas |
| MARINA AND NORTH BOAT RAMP | | | | |
| 6 | Rebuild the marina and associated landscape to improve visitor experience, parking, a new marina building, limited boat/dinghy storage, and a day use area. | Improve visitor experience. Some existing campsites would be relocated. | Upgrade & 1995 RMP (p. 4-29, 4-30) | Task Force: <ul style="list-style-type: none"> Connect all northern developed areas with a trail Public Workshop: <ul style="list-style-type: none"> No overhead utilities Mitigate net loss of camping Centrally locate the building Provide dry storage options Provide storage that allows masts to stay rigged New or remodeled facility is good Loss of quality campsites/loss of trees New building location could cause loss in store revenue. Would lose easy access – drive through public. Allow food service Distance from boat ramp Keep current location – move road to new location allow parking in front Loss of dry storage – sailboats Secure shop/work area – fenced Need food service Visibility from road New building necessary Should parking be allowed on the shoreline when water levels are low? Mailed Public Comment: <ul style="list-style-type: none"> Do not eliminate the Lowell's campsites adjacent to the existing marina Preserve the trees in this area |
| BIG THOMPSON CAMPGROUND | | | | |
| 7 | Redesign the campground to improve vehicle access and visitor experience. | Improve visitor experience. | 1995 RMP | Mailed Public Comment: <ul style="list-style-type: none"> Noise and activity generated by existing camping areas |

| Map # | Major Carter Lake Opportunities | Justification/ Discussion | Upgrade/ New/ 1995 RMP | Workshop Comments |
|------------------------|--|--|------------------------------|---|
| NEW QUARRY AREA | | | | |
| 8 | Develop a new swim beach area with parking, restrooms, concessions, park office, first aid station, lawn area, and picnic shelters. | Improve visitor experience and safety. County Road 31 would need to be realigned to create more space next to the shoreline. The adjacent neighborhood may be opposed. | 1995 RMP | <p>Public Workshop:</p> <ul style="list-style-type: none"> ▪ Seems like a great location ▪ Road lends itself to relocation ▪ Excellent idea! ▪ What kind of concessions? ▪ Concerns about competition with marina ▪ Limited cell phone coverage – emergencies, ranger coverage? ▪ Benefits day use ▪ Sand migration issue ▪ Fire danger concerns – exits, prevailing winds, fire hydrants ▪ Could cause congestion, noise, trash, wildlife impacts – fox, osprey ▪ Access to rock climbing – liability issues ▪ Smoke – trail use by new visitors ▪ Overall – location choice? <p>Mailed Public Comment:</p> <ul style="list-style-type: none"> ▪ Safety concerns regarding children in the neighborhoods with easy access and increased foot traffic onto the private roads ▪ Excessive noise from talking loud and yelling, as well as from music blaring ▪ Safety concerns from fireworks, such as bottle-rockets ▪ Until and unless the course of the county road is changed, day use of the quarry area should be prohibited ▪ Use of fire in family grills or park campfire grills should not be allowed to prevent wildfires |
| SWIM BEACH | | | | |
| 9 | Close vehicle access to the existing beach area and convert most of the parking area into a small picnic area with trees, shelter, and picnic tables. The area would be accessible by boat and trail only. | Improve safety and diversify recreation experience. A new swim beach would have to be built with vehicle access. | Upgrade | <p>Task Force:</p> <ul style="list-style-type: none"> ▪ Beach should be moved, but where? Beach at North Pines? ▪ Sand importation <p>Public Workshop:</p> <ul style="list-style-type: none"> ▪ Good idea – benefits day use ▪ Why so many restrictions on swimming anyway? |

| Map # | Major Carter Lake Opportunities | Justification/ Discussion | Upgrade/ New/ 1995 RMP | Workshop Comments |
|----------------------------|--|--|------------------------|--|
| | | | | <ul style="list-style-type: none"> Move beach to saddle area |
| CARTER KNOLLS | | | | |
| 10 | Convert the campground to a scenic overlook, trailhead, and picnic area. | Site more suitable for day use. These campsites would be relocated to another campground. | 1995 RMP (p. 4-30) | Task Force: <ul style="list-style-type: none"> Will decrease in campsites be made up elsewhere? Group area? Would cabins be more sheltered? Public Workshop: <ul style="list-style-type: none"> Elimination of camping opportunities Good cabin location? |
| OLD QUARRY AREA | | | | |
| 11 | Develop a group camping area that would be available by reservation only. | Meet demand for group camping facilities. The site does not have good lake access and is far from other developed areas. | New | Task Force: <ul style="list-style-type: none"> Low priority for this site Site too expensive for development Long-term option Public Workshop: <ul style="list-style-type: none"> Connect to loop trail Need for group camping Privacy – noise containment, visual barrier Potential fire hazard Less effects on residents Poor access to other areas Could lead to people walking on the roadway Issue: emergency access |
| SADDLE DAY USE AREA | | | | |
| 12 | Improve Fawn Hollow Trail. | Improve visitor experience and limit resource damage. | Upgrade | Public Workshop: <ul style="list-style-type: none"> Utilize social trail by lake to create a loop – help eliminate social trails Trail improvements recognizing bouldering user group Needs to be done |
| SOUTH SHORE | | | | |
| 13 | Improve the campground by developing more campsites, a permanent concession building, and group camping area | Improve visitor experience. | Upgrade | Task Force: <ul style="list-style-type: none"> Large lot on south end could be better utilized Public Workshop: <ul style="list-style-type: none"> Concern about competition with marina Need beverage concession at south end Additional campsites are needed No to group camping – keep |

| Map # | Major Carter Lake Opportunities | Justification/ Discussion | Upgrade/ New/ 1995 RMP | Workshop Comments |
|-----------------------|---|---|------------------------|--|
| | | | | group day use |
| TRAILS | | | | |
| 14 | Build and improve trails to: 1. Connect developed sites 2. Create a loop trail 3. Improve experience on the Sundance Trail | Improve visitor experience. Trail construction would be difficult in some areas due to steep topography and road alignment. | 1995 RMP (see map) | Task Force: <ul style="list-style-type: none"> ▪ Enhance current trails ▪ Diversify recreation vs. low return projects Public Workshop: <ul style="list-style-type: none"> ▪ Would love to see trail go around lake – horse friendly/mountain bikes ▪ Adopt trails to keep them clean ▪ Trail around east side ▪ Mitigate bicycle issues with trails |
| 15 | Connect Carter Lake trails to other existing and future regional trails. | Improve visitor experience. Easements would have to be purchased through private property. | New | Task Force: <ul style="list-style-type: none"> ▪ Diversifies recreation but provides low return for revenue Public Workshop: <ul style="list-style-type: none"> ▪ YES!! |
| WEST SHORELINE | | | | |
| 16 | Create primitive boat-in/ hike-in campsites (no fires). | Diversify recreation opportunities. These sites would be difficult to maintain. | New | Task Force: <ul style="list-style-type: none"> ▪ Not feasible for Carter ▪ Fires will occur ▪ Diversifies recreation but provides low return for revenue Public Workshop: <ul style="list-style-type: none"> ▪ Great idea! ▪ Maintain existing primitive camping experience – limit # of sites ▪ Mooring balls/docks for campers – 1-night camping ▪ No fires ▪ Fire issues ▪ Impact on quality of fishing – crowding diminishes experience and fishing; less room per angler ▪ Ideal sight for camping – fire ▪ #8 issues mitigated by this location |
| 17 | Potential group campsite east of Carter Knolls. | Diversify recreation opportunities. | New | Public Workshop: <ul style="list-style-type: none"> ▪ Majority of group thought this was best option ▪ Would need restroom and group shelter – no electricity, solar lighting |

| Map # | Major Carter Lake Opportunities | Justification/ Discussion | Upgrade/ New/ 1995 RMP | Workshop Comments |
|-------|--|---------------------------|------------------------|-------------------|
| | Create a small campground that doesn't allow fires – respiratory problems. | | Added at workshop | |
| | Provide a Public Message Board – communication tool. | | Added at workshop | |
| | The county roads need to have paved bicycle lanes. | | Added at workshop | |

Other Comments made about Carter Lake

- Are numbers 1-10 fiscally sound? Are there different ways to make revenue? Such as special events s/a hot air balloons?
- The Parks Task Force should have a neighbor representative.
- Bicycle issues – empower rangers to enforce transportation rules on roads.
- Create partnerships – include neighbors.
- What impact on visitation will the new Chimney Hollow open space create?
- Can current infrastructure (i.e., county roads) support increase in visitation that may be caused by new projects?
- What is the impact of new projects on staffing/volunteers?
- Improve information dissemination to neighbors.
- Address fire ban decisions.
- Connect Devils Backbone open space and trail to Carter Lake.

MAJOR FLATIRON RESERVOIR OPPORTUNITIES

| Map # | Major Flatiron Reservoir Opportunities | Justification/ Discussion | Upgrade/ New/ 1995 RMP | Workshop Comments |
|-------|---|----------------------------------|------------------------|--|
| 1 | Build a trail from the group picnic area along the shoreline to the Bison Visitor Center. | Diversify recreation experience. | 1995 RMP | |
| 2 | Build more cabins. | Meet demand for more cabins. | New | Public Workshop: <ul style="list-style-type: none"> ▪ Keep space between sites ▪ Is there enough room? |
| 3 | Connect to regional trails (Carter and Chimney Hollow). | Diversify recreation experience. | 1995 RMP | Public Workshop: <ul style="list-style-type: none"> ▪ Good |

MAJOR PINEWOOD RESERVOIR OPPORTUNITIES

| Map # | Major Pinewood Reservoir Opportunities | Justification/ Discussion | Upgrade/ New/ 1995 RMP | Workshop Comments |
|-------------------------------------|--|--|------------------------|---|
| BLUE MOUNTAIN AREA CAMPSITES | | | | |
| 1 | Rebuild the parking area and campsites or cabins, or revert to a trailhead only. | Improve visitor experience. | Upgrade | Planning Team: <ul style="list-style-type: none"> ▪ Cabins or day use? Public Workshop: <ul style="list-style-type: none"> ▪ Provide water ▪ No cabins! ▪ Visual impact ▪ Reduce group sizes ▪ Day use only ▪ Less camp sites ▪ Parking lot fills with campers and cars ▪ Less campsites ▪ Limit existing & future lighting |
| TRAILS | | | | |
| 2 | Design and build a trail along the east shoreline to connect developed sites, trails, and Ramsay-Shockey Open Space. | Diversify recreation experience and reduce resource impacts. | 1995 RMP (p. 6-19) | Public Workshop: <ul style="list-style-type: none"> ▪ Improve trail around Fisherman’s Cove |
| BOAT RAMP AREA | | | | |
| 3 | Redevelop the campsites and create an organized parking next to the boat ramp. | Improve visitor experience and vehicle circulation. | 1995 RMP (p. 6-20) | Task Force: <ul style="list-style-type: none"> ▪ Limit RV size ▪ Focus on tent camping ▪ Public Workshop: ▪ Visitors camp below high water level |
| WINDY PINES | | | | |
| 4 | Redevelop campsites, a new toilet and reduce social trails. | Improve visitor experience and reduce resource impacts. | 1995 RMP (6-20) | Planning Team: <ul style="list-style-type: none"> ▪ Reduce campsite density |
| DAM AREA | | | | |
| 5 | Build a picnic area with shelters, tables, shoreline fishing, and a restroom. | Improve and diversify visitor experience. | New | |

Stakeholder Report

Interviews were held with individuals, groups and government organizations (stakeholders) to seek their opinions about the management of Larimer County Parks, including the four reservoirs the County manages for the US Bureau of Reclamation. This was the first step in the public outreach process for updating the Larimer County Parks Master Plan and Resource Management Plan / Environmental Assessment for the Reclamation Reservoir parks.

Interviews were held in Loveland and Fort Collins on May 25 and 26. Stakeholders who were unable to attend the interviews in person were interviewed by phone over the course of the next few weeks.

Conclusions

Accessibility, convenience, and proximity to home were the top responses of stakeholders when asked what they liked most about Larimer County parks.

Fees and overcrowding (in general and in specific areas), motorized boat recreation, and the potential designation of Horsetooth Mountain Park as county open space were the most frequent concerns and/or least favorite aspects of the parks.

Suggested improvements were focused into several specific areas: water-based recreation improvements (e.g., wakeless areas, more docks), addressing overcrowding, and networking trails. Several special recreation uses/facilities were suggested for niche interests, including a shooting range, a motorized recreation area, a horse park, floating docks for crew boats, etc.

Overall, stakeholders agree there is currently an adequate amount of parks, and it would be best to invest more efficiently into existing parks than to overextend funds and staffing by creating new parks.

Other comments encompass a diversity of park management aspects: more development versus preserving rustic and primitive character, wildlife protection, horse facilities, additional camper and boat facilities (e.g., showers, campsites, docks, dump stations), and encouraging private enterprise at the parks (e.g., a restaurant at Horsetooth Reservoir).

List of Stakeholders

| Name | Types of Stakeholder | Interviewed |
|--|----------------------|-------------|
| Colorado Division of Wildlife | Government | Yes |
| CSU Research Foundation, Real Estate | Government | Yes |
| Fort Collins Natural Areas | Government | Yes |
| Larimer County Planning Department | Government | Yes |
| Lory State Park | Government | Yes |
| Colorado Natural Heritage Program | Government | Contacted |
| Colorado State Forest Service | Government | Contacted |
| Fort Collins Water Department | Government | Contacted |
| Larimer County Sheriff's Department | Government | Contacted |
| USGS | Government | Contacted |
| Carter Lake Marina | Concessionaire | Yes |
| Inlet Bay Marina | Concessionaire | Yes |
| Carter Lake Canoe & Kayak Rental, Inc | Concessionaire | Contacted |
| Field of Dreams | Park User | Yes |
| Carter Lake Sail Club & Members | Park User | Yes |
| Colorado Mountain Club | Park User | Yes |
| CSU Outdoor Adventure Program | Park User | Yes |
| Centennial Bass | Park User | Yes |
| Horsetooth Sail & Saddle Club / Horsetooth Recreation Corporation | Park User | Yes |
| Larimer County Horseman's Association | Park User | Yes |
| Boy Scouts of America | Park User | Yes |
| Cycologist | Park User | Yes |
| Fort Collins Rowing Association, Inc. | Park User | Yes |
| CSU Crew Team | Park User | Yes |

| Name | Types of Stakeholder | Interviewed |
|--|------------------------|------------------------|
| Carter Lake Marina Customer | Park User | Yes |
| Fort Collins Mountain Bike Association | Park User | Yes |
| Colorado Walleye Association | Park User | Contacted |
| Diamond Peaks Mountain Bike Patrol | Park User | Contacted |
| Loveland Sertoma Club | Park User | Contacted |
| Quarter Horse Association | Park User | Contacted |
| Rock Climbing Coalition | Park User | Contacted |
| Team BOB (Babes on Bikes) | Park User | Contacted |
| CSU Sport Clubs | Park User | Contacted |
| Bellvue Area Homeowners / CATCH | Park Neighbor | Interview in late June |
| Dennis Acott | Park Neighbor | Yes |
| Tom and Carole Dougherty | Park Neighbor | Yes |
| Ken Ashley (former Parks Board Chairman) | Park Neighbor | Yes |
| Citizen Planners | Community Organization | Contacted |
| Estes Park Planning Commission | Community Organization | Contacted |
| Estes Valley Land Trust | Community Organization | Contacted |
| Poudre Canyon Sierra Club | Community Organization | Contacted |
| Audubon Society | Community Organization | Contacted |

Note: Those who are listed as “contacted” were contacted, but did not request an interview.

Questions and Responses

What Larimer County Parks do you visit the most?

Horsetooth Reservoir – 5

Flatiron Reservoir – 0

Pinewood Reservoir – 0

Carter Lake – 5

Horsetooth Mountain Park – 8

Bingham Hill Roadside Park – 0

Big Thompson River Roadside Parks – 0

Field of Dreams – 1

Note: The numbers indicate the park the stakeholders use. Not all interviewees specified a park. Some were not park users, but are stakeholders.

What do you like most about Larimer County Parks?

| Response | Stakeholder |
|---|--|
| Good fishing | Centennial Bass Club |
| Quality fish | Centennial Bass Club |
| Water base | Dan Walburger, Carter Lake Marina |
| Natural aesthetics | Centennial Bass Club |
| Good scenic quality | Dan Walburger, Carter Lake Marina |
| Interesting geology, plants, ecology, wildlife, and views | Colorado Mountain Club |
| Wildlife | Centennial Bass Club |
| Maintain a multi-use trails approach | Larimer County Horseman’s Assoc. |
| Good for rowing; long, limited wind | Rowing Association |
| Convenient | Rowing Association |
| Convenient | Boy Scouts |
| Good access | Boy Scouts |
| Accessible/convenient | CSU Adventure Program |
| Easy access from Fort Collins | Jennifer Brooks, The Cycologist |
| Ease of access | Fort Collins Mountain Bike Association |

| Response | Stakeholder |
|--|---|
| | (Howard Ong and Bill Jenkins) |
| Convenient access | Colorado Mountain Club |
| Location is very good | Carter Sail Club |
| Clean | Boy Scouts |
| Facilities are adequate | Carter Sail Club |
| Group fee worked well | Boy Scouts |
| Visitors are courteous | Carter Sail Club |
| Nice to have a diversity of parks | Ken Ashley, Former Park Board Chair |
| Well developed parks | Horsetooth Sail and Saddle, HT Rec. Corp. |
| Mountain biking opportunities are good | Horsetooth Sail and Saddle |
| Horsetooth Mountain Park is an outstanding mountain biking challenge | Fort Collins Mountain Bike Association (Howard Ong and Bill Jenkins) |
| The diversity of trail opportunities | Colorado Mountain Club |
| Horsetooth Mountain Park hiking | Ken Ashley, Former Park Board Chair |
| Horseback riding | Horsetooth Sail and Saddle |
| Well-managed | Horsetooth Sail and Saddle |
| Good at enforcing rules | Centennial Bass Club |
| The Park Director is accessible | Horsetooth Sail and Saddle |
| Good task force | Horsetooth Sail and Saddle |
| Staff is responsive and polite | Horsetooth Sail and Saddle |
| Not too much ranger presence | CSU Adventure Program |
| Parks are important to the character of the community | Horsetooth Sail and Saddle |
| Parks are open to the public, some public lands are closed | Dennis Acott, Former Parks Board Member |
| County run parks are best, local investment, makes the county a better place to live, interconnected | Mark Wilson, Carter Lake Marina Resident |
| Conservation of resources could limit recreational opportunities | Fort Collins Mountain Bike Association (Howard Ong and Bill Jenkins) |
| Free 45-minute parking area is a good idea at East HT sites | FC Natural Areas |
| New marina parking lot is good | Tom Dougherty, Horsetooth neighbor |
| Multi-use is good | CSU Adventure Program |
| Recreation use management on reservoir is good | Tom Dougherty, Horsetooth neighbor |
| There should be fees to use parks | Jennifer Brooks, The Cycologist |
| Keep recreation available | Jennifer Brooks, The Cycologist |

What do you like least about Larimer County Parks?

| Response | Stakeholder |
|---|---|
| Amount of boat traffic | Centennial Bass Club |
| Large boats and large swells | Centennial Bass Club |
| Unsafe boaters | Centennial Bass Club |
| Larger and faster boats produce more wave action | Horsetooth Sail and Saddle, HT Rec. Corp. |
| Marina is expanding too much | Tom Dougherty, Horsetooth neighbor |
| Crowding | Larimer County Horseman's Association |
| Too much partying | FC Natural Areas |
| Overuse and rowdy users | Horsetooth Sail and Saddle, HT Rec. Corp. |
| Carter Lake has lost its rustic feel, more traffic and loud, bigger boats and RVs | Mark Wilson, Carter Lake Marina Resident |
| Need to address water quality | Tom Dougherty, Horsetooth neighbor |
| Short-handed on staff | Horsetooth Sail and Saddle, HT Rec. Corp. |
| May be over-managed, more complicated now, over-developed now | Dennis Acott, Former Parks Board Member |
| They are managed as urban parks | Jennifer Brooks, The Cycologist |

| | |
|--|---|
| Permit fee has gone from \$2,500-\$4,800 to \$12,500; \$200 member/year, more restricted | Carter Sail Club |
| Verbal agreements have changed to limited written agreements | Carter Sail Club |
| The club is not being treated equally as a commercial concessionaire | Carter Sail Club |
| Sail and Saddle is expensive and exclusive | Dennis Acott, Former Parks Board Member |
| Fee structure is not good, expensive | Dan Walburger, Carter Lake Marina |
| Increase in annual fees (improvements are not seen for these fees) | Centennial Bass Club |
| There is some conflict with mountain bicyclists | Colorado Mountain Club |
| Too much traffic on Shoreline Drive | Tom Dougherty, Horsetooth neighbor |
| Speeding on Shoreline Drive | Tom Dougherty, Horsetooth neighbor |
| Noise in campgrounds | Tom Dougherty, Horsetooth neighbor |
| Too many dogs cause noise and waste | Tom Dougherty, Horsetooth neighbor |

Does Larimer County provide an adequate amount and types of parks?

| Response | Stakeholder |
|---|--|
| Good | Dan Walburger, Carter Lake Marina |
| Adequate | Centennial Bass Club |
| More is better, but there is a good amount now | Jennifer Brooks, The Cycologist |
| There are enough organizations providing diverse recreation | Larimer County Horseman's Assoc. |
| More parks are better, if funding is adequate, and reasonable user fees | Dennis Acott, Former Parks Board Member |
| Improve the parks that exist now | Mark Wilson, Carter Lake Marina Resident |
| More parks stretch already limited dollars | Mark Wilson, Carter Lake Marina Resident |
| Do not overextend, beyond existing funding | Mark Wilson, Carter Lake Marina Resident |
| More parks are needed to distribute recreators, to better protect sensitive areas | FC Natural Areas |
| Prefer to see Glade managed as a state park; it would be better funded | Centennial Bass Club |
| Provide a horse park (jumping, polocross, barrel racing, etc.) | Larimer County Horseman's Assoc. |
| Provide motorized recreation area | Ken Ashley, Former Parks Board Chair |
| Provide shooting range | Ken Ashley, Former Parks Board Chair |
| Provide more close-by hiking opportunities | Colorado Mountain Club |
| Provide more hiking trails along the rivers | Colorado Mountain Club |

What improvements would you like to see in Larimer County Parks?

| Response | Stakeholder |
|--|---|
| Buoys need lights and better reflectors for safety | Centennial Bass Club |
| Docks need lights | Centennial Bass Club |
| Need crew docks, 2 x 60ft docks | Rowing Association |
| Need a boat storage building (80x100ft) | Rowing Association |
| Early morning calm water | Rowing Association |
| Need breakwater at saddle club or wakeless zone near saddle club | Horsetooth Sail and Saddle, HT Rec. Corp. |
| Inland area coves should be wakeless, educate boaters | Centennial Bass Club |
| Less motorized boating would be good | Carter Sail Club |
| Don't crowd South Bay too much | Dennis Acott, Former Parks Board Member |
| Need more beaches | Boy Scouts |
| Keep cars off of beach at Carter Lake | Mark Wilson, Carter Lake Marina Resident |
| Provide horseback riding at Carter Lake | Larimer County Horseman's Assoc. |
| Provide horse camping facilities | Centennial Bass Club |
| Connect Chimney Hollow trails to Carter Lake in the future | Larimer County Horseman's Assoc. |

| Response | Stakeholder |
|--|--|
| Create a trail connection from Carter Lake to Berthoud | Larimer County Horseman's Assoc. |
| Add a trail to west through Dixon Ranch west of Horsetooth Rock and Lory, connect to USFS | Ken Ashley, Former Parks Board Chair |
| More rangers on the trails | Jennifer Brooks, The Cycologist |
| Improve trail maintenance (e.g., Foothills/Shoreline Trail) | FC Natural Areas |
| Provide better trail maintenance especially on trails with loose rock | Colorado Mountain Club |
| Too many social trails | FC Natural Areas |
| Need more education about fees and why they are needed | Ken Ashley, Former Parks Board Chair |
| Make sure visitors pay fees | Jennifer Brooks, The Cycologist |
| Its unclear that fees need to be paid for "walk-ins" | FC Natural Areas |
| Spread development to other parts of Horsetooth Reservoir (north end) | Dennis Acott, Former Parks Board Member |
| Are there adequate group facilities? | Colorado Mountain Club |
| Provide more than one dump station | Dennis Acott, Former Parks Board Member |
| Keep facilities rustic and less developed, primitive paths | Mark Wilson, Carter Lake Marina Resident |
| Keep users separated by activity (e.g., groups to the south, boats and RVs to the north) | Mark Wilson, Carter Lake Marina Resident |
| Better Restroom maintenance | FC Natural Areas |
| Inlet parking lot needs to be paved, dusty. | Inlet Bay Marina |
| Parking area next to Maxwell NA gets muddy | FC Natural Areas |
| Pave roads, campgrounds | Dan Walburger, Carter Lake Marina |
| Dust from parking and roads | Tom Dougherty, Horsetooth neighbor |
| Add showers and restrooms at Inlet Bay | Inlet Bay Marina |
| Mud is a problem at use areas | Boy Scouts |
| New flush toilets and showers | Dan Walburger, Carter Lake Marina |
| What is the dog rule? Need an area for dogs off leash | FC Natural Areas |
| Poison ivy along Shoreline Trail | FC Natural Areas |
| Provide picnic table at Sunset Beach | FC Natural Areas |
| Better communication with users | CSU Adventure Program |
| Provide more interpretation | Colorado Mountain Club |
| Teach orienteering | Boy Scouts |
| Build a restaurant: needs easy access from Ft. Collins, at pullouts at SE Rd. Needs to be at a no-fee location | Inlet Bay Marina |
| Duncan's Ridge is trampled, needs more maintenance | CSU Adventure Program |
| More campsites | Dan Walburger, Carter Lake Marina |
| The Carter Lake south parking area could be used as a camping area | Dan Walburger, Carter Lake Marina |
| Provide more group camping facilities | Boy Scouts |
| Inlet Bay campground is a good location for rowing | Tom Dougherty, Horsetooth neighbor |

Do you have other comments or suggestions?

| Response | Stakeholder |
|---|---|
| Consult with club before changes occur, i.e., trees | Centennial Bass Club |
| Tournament fees expensive, no services are provided – why are there fees? | Centennial Bass Club |
| Would like a flex fee (hang tag) or group rate | Rowing Association |
| Horsetooth Mountain Park should continue to have fees. | Dennis Acott, Former Parks Board Member |
| Fees should be charged | Mark Wilson, Carter Lake Marina Resident |
| Large vehicles (vans, buses) pay the same fee as small ones | Rowing Association |
| Adequate funding is an issue | Dennis Acott, Former Parks Board Member |
| What is the financial plan if revenue drops off? | Fort Collins Mountain Bike Association (Howard Ong and Bill Jenkins) |

| Response | Stakeholder |
|--|--|
| Rowing club locations: north boat ramp, best location; Sail and Saddle Club would be a convenient location for rowing; Sunrise (current location) has wind problems and trespassing issues for rowing; SE shoreline would work for rowing; Inlet Bay would work for rowing | Rowing Association |
| Rowing needs a movable docking system | Rowing Association |
| The new docks are good at Carter Lake | Dan Walburger, Carter Lake Marina |
| Remove the motorized boats from Horsetooth Reservoir | Tom Dougherty, Horsetooth neighbor |
| A web cam would be helpful | Rowing Association |
| New campground improvements are good | Horsetooth Sail and Saddle, HT Rec. Corp. |
| Expand use at the north end to spread use | Horsetooth Sail and Saddle, HT Rec. Corp. |
| The Horsetooth Recreation Corporation wants to renew their contract to make improvements and to protect their investments | Horsetooth Sail and Saddle, HT Rec. Corp. |
| Ask Task Force members to describe why they are on the Task Force | Dennis Acott, Former Parks Board Member |
| Can some open space funds be used for park maintenance? | Ken Ashley, Former Parks Board Chair |
| If Horsetooth Mountain Park becomes open space, recreation use could increase' opposed to this | Fort Collins Mountain Bike Association (Howard Ong and Bill Jenkins) |
| Horsetooth Mountain Park as open space could reduce recreation opportunities (open space status would restrict recreation) | Jennifer Brooks, The Cycologist |
| Where would the fees come from to manage Horsetooth Mountain Park if it became open space? | Fort Collins Mountain Bike Association (Howard Ong and Bill Jenkins) |
| Do not make Horsetooth Mountain Park an open space | Jennifer Brooks, The Cycologist |
| If Horsetooth Mountain Park becomes open space, would that have an economic impact on Lory? How would that affect the dual pass rule? | Lory State Park |
| It's good that Horsetooth Mountain Park is open 24 hours | Fort Collins Mountain Bike Association (Howard Ong and Bill Jenkins) |
| Private services should be encouraged (e.g., restaurants) | Dennis Acott, Former Parks Board Member |
| Horsetooth users use of Lory restrooms; Lory would like help to clean them | Lory State Park |
| Who do the parks serve? Who are the showers for? It's better to invest in programs | Dennis Acott, Former Parks Board Member |
| Look at the park's history to keep them unique as niches; direct visitors to the right niches | Mark Wilson, Carter Lake Marina Resident |
| There is some trespassing on CSU Foothills Campus | CSU Real Estate |
| CSU could sell some land adjacent to CR 23 to Larimer County | CSU Real Estate |
| Better secure the area between CSU Foothills Campus and Reclamation land | CSU Real Estate |
| Provide hunting where feasible to control deer and provide experience; minimize bear and lion contact | CDOW |
| Could the county manage Lon Hagler State Wildlife Area? | CDOW |
| Could CDOW manage the Big Thompson properties? | CDOW |
| What is the plan for Field of Dreams? | Larry Martin, Field of Dreams |
| Bar across from the Field of Dreams wants to use the field for recreation (e.g., volleyball) | Larry Martin, Field of Dreams |
| New trail construction should minimize impacts to wildlife | CDOW |
| Parking is needed for trail and Field of Dreams; part of the field could be used, combing with Blue Sky Trail parking? | Larry Martin, Field of Dreams |
| If trails are closed to bicycle use, balance this with new trails elsewhere | Fort Collins Mountain Bike Association (Howard Ong and Bill Jenkins) |
| How does the neighborhood relate to the Blue Sky Trail? | Larry Martin, Field of Dreams |
| Need more safety for pedestrians and bicycles on CR 38E | Fort Collins Mountain Bike Association |

| Response | Stakeholder |
|---|------------------------------------|
| | (Howard Ong and Bill Jenkins) |
| There is fire danger from backcountry Shoreline camping | Lory State Park |
| Waste from backcountry campsites blows into Lory SP | Lory State Park |
| Designate climbing/bouldering areas to limit impacts | FC Natural Areas |
| Too much development is affecting the recreational experience | Tom Dougherty, Horsetooth neighbor |

APPENDIX D: APPLICABLE LAWS & REGULATIONS

- The 1968 Architectural Barriers Act (Public Law [P.L.] 90-480)
- Section 504 of the 1973 Rehabilitation Act (P.L. 93-112)
- The 1990 Americans with Disabilities Act (P.L. 101-336)
- The Federal Water Project Recreation Act of 1965 (P.L. 89-72, as amended by Title 28 of P.L. 102-575)
- American Indian Religious Freedom Act of 1978
- Archeological Resources Protection Act of 1979, as amended
- Archeological and Historic Preservation Act of 1974
- Clean Water Act of 1974, as amended
- Clean Air Act of 1970, as amended
- Department of Defense American Indian and Alaska Native Policy, October 20, 1998
- Endangered Species Act of 1973, as amended
- Executive Order 12875, Enhancing the Intergovernmental Partnership, October 26, 1983
- Executive Order 12898, February 11, 1994, Environmental Justice
- Executive Order 11990, 1977, Protection of Wetlands
- Executive Order 13007, Indian Sacred Sites, May 24, 1996
- Executive Order 13084, Consultation and Coordination with Indian Tribal Governments, May 14, 1998
- Fish and Wildlife Coordination Act of 1958, as amended
- Indian Trust Assets Policy, July 1993
- Migratory Bird Treaty Act of 1918, as amended
- National Environmental Policy Act of 1969
- National Historic Preservation Act of 1966, as amended
- Native American Graves Protection and Repatriation Act of 1990
- Presidential Memorandum: Government-to-Government Relations with Native American Tribal Governments, April 29, 1994
- Concessions Policy LND P02 and Directives and Standards LND 04-01 and 04-02
- Recreation Policy LND P04 and Directives and Standards LND 01-01
- National Environmental Policy Act ENV P03
- Other pertinent Reclamation policy and directives and standards

APPENDIX E: SITE DESIGNS

Note: the other designs that were completed can be found in chapter 4.

Horsetooth Reservoir



Figure E-1. Field of Dreams.



Figure E-2. Pull-thru Sites and Camper Services.



Figure E-3. RV Campground and Maintenance Facilities.

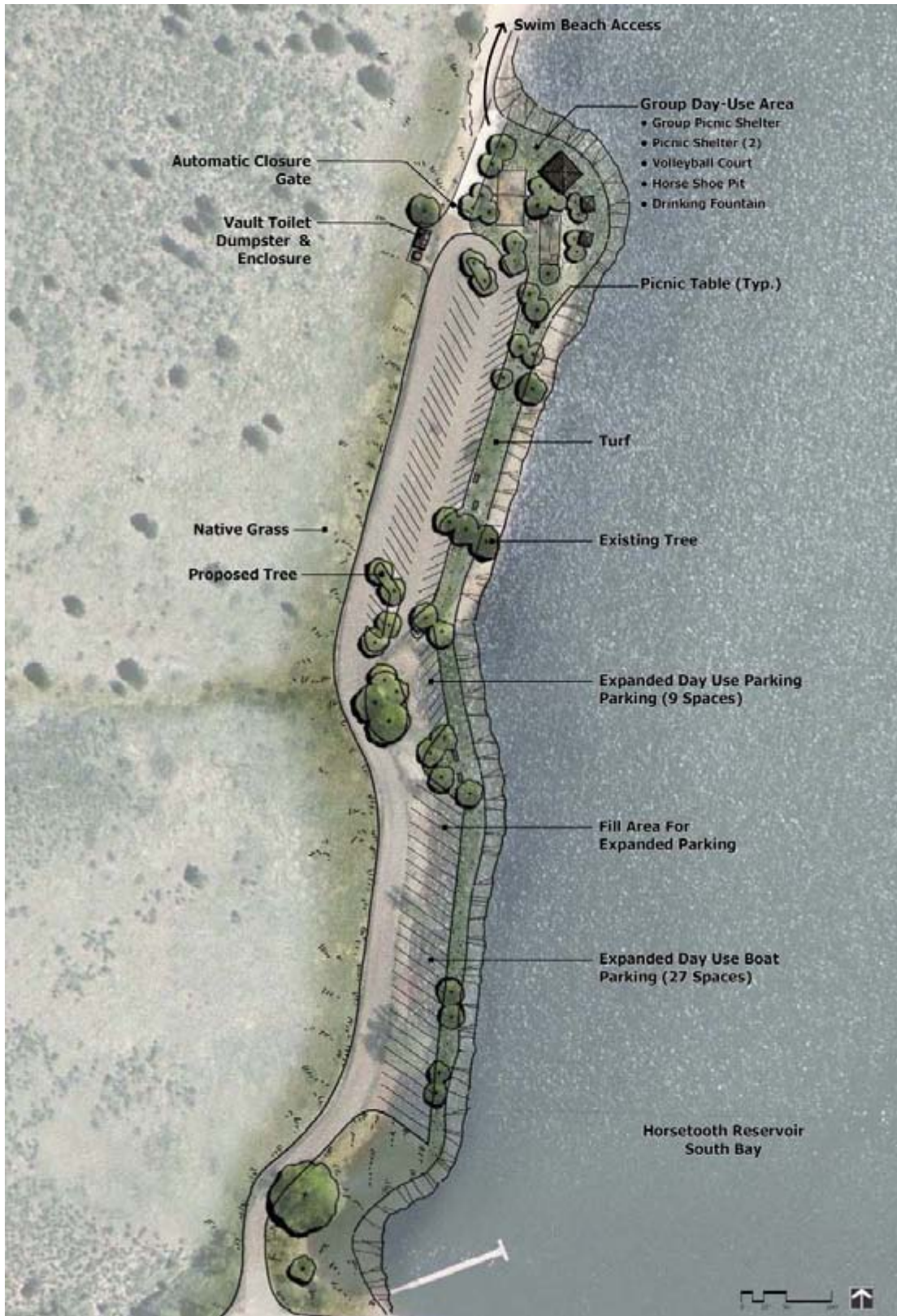
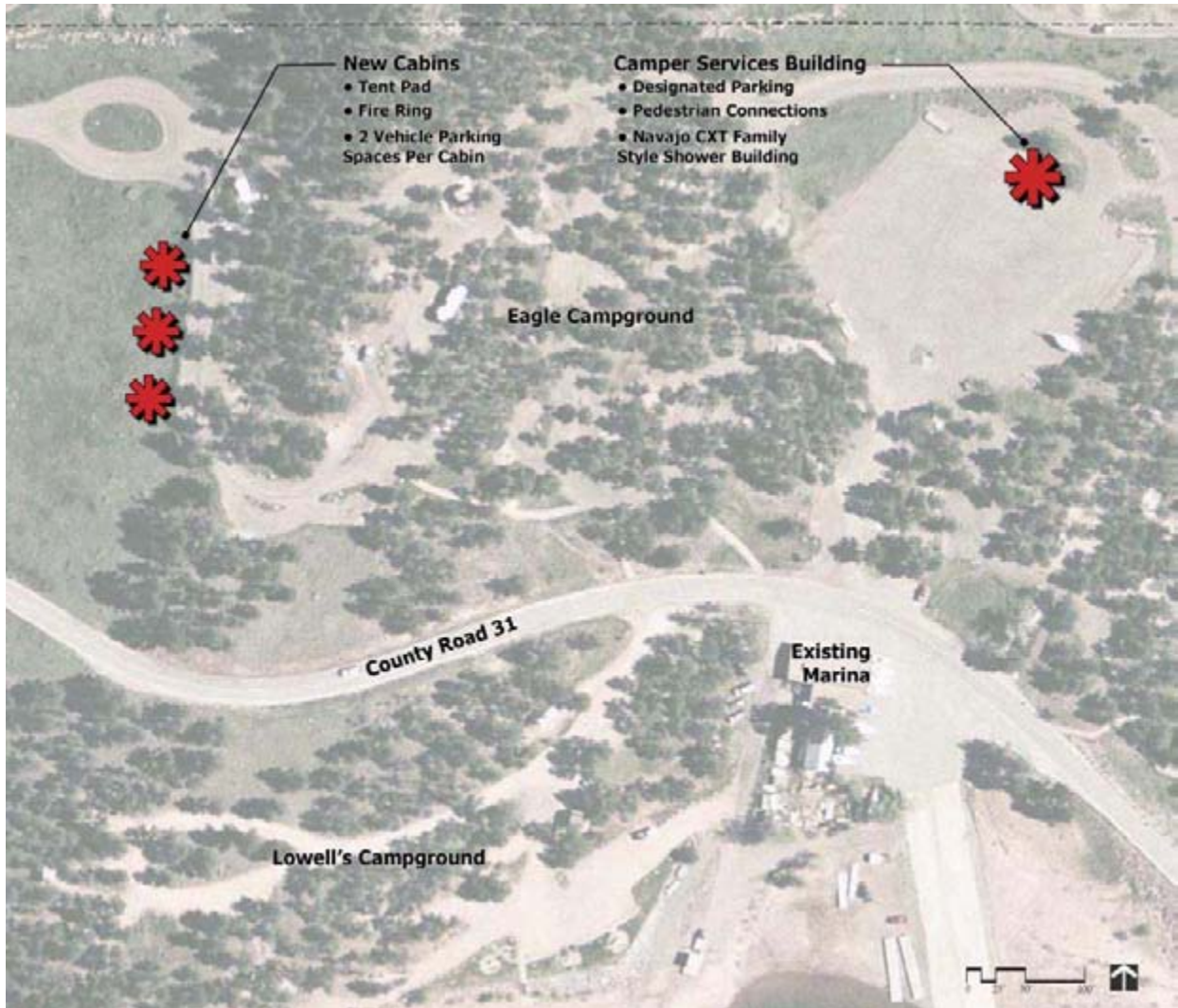


Figure E-4. Swim Beach and Day Use Area.

Carter Lake



FigureE-5. Eagle Campground.



Figure E-6. North Pines Campground.



Figure E-7. South Shore Campground, view 1.

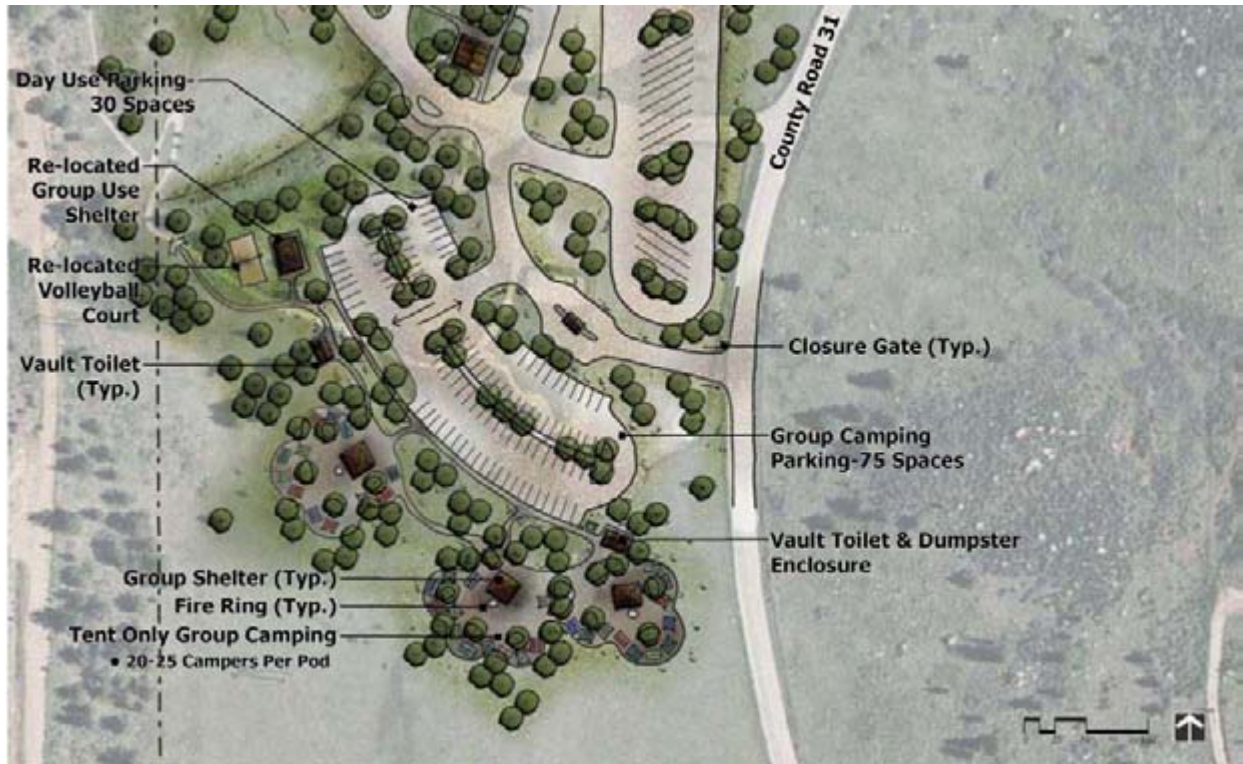


Figure E-8. South Shore Campground, view 2.

Pinewood Reservoir



Figure E-9. Launch Area.



FigureE-10. Day Use (Dam) Area.



Figure E-11. Windy Pines Campground.