

## REGULATIONS TO HELP US SERVE YOU

These open spaces are managed for their diverse habitats and the wildlife they support. Regulations are enforced to protect you and the natural resources of the open spaces.

- ▶ **Day use only** ~ open spaces are closed sunset to sunrise
- ▶ **NO DOGS on Rimrock Open Space or Coyote Ridge Natural Area** ~ on all other areas, pets must be kept on leash at all times.



- ▶ **Share the trail** ~ foot travel, non-motorized bikes, and horses are welcome on designated trails
- ▶ Please **pack out** all trash and dog refuse
- ▶ Please **do not remove rocks or plants**
- ▶ **No camping or fires** allowed
- ▶ **No hunting** allowed
- ▶ All group use and/or events require a permit. Call (970) 679-4570

## PARTNERSHIPS MAKE IT HAPPEN

The expression “Two heads are better than one” underscores the extraordinary power of partnerships. This trail system is made possible through the combined efforts and/or funding of: Citizens of Larimer County, Help Preserve Open Spaces Sales Tax, City of Fort Collins, Great Outdoors Colorado, Colorado State Parks Trails Program, Colorado Department of Transportation, North Front Range Metropolitan Planning Organization, and Volunteers for Outdoor Colorado.



Lottery dollars from games like \$35 Million Cash Spectacular helped develop the Devil’s Backbone-to-Horsetooth trail system, including the Blue Sky Trail. When you play these games, part of the proceeds are returned to Larimer County Parks and Open Lands for development of parks and recreation facilities.

WHEN YOU PLAY \$35 MILLION CASH SPECTACULAR, YOU KEEP OUR PARKS, RECREATION AND WILDLIFE SPECTACULAR, TOO.

For more information on where proceeds from the lottery go, please visit [coloradolottery.com](http://coloradolottery.com).

**COLORADO LOTTERY**

## LARIMER COUNTY PARKS AND OPEN LANDS

- |                          |                             |
|--------------------------|-----------------------------|
| Bingham Hill Park        | Devil’s Backbone Open Space |
| Carter Lake              | Eagle’s Nest Open Space     |
| Flatiron Reservoir       | Fossil Creek Reservoir      |
| Glade Park               | Regional Open Space         |
| Horsetooth Reservoir     | Ramsay-Shockey Open Space   |
| Horsetooth Mountain Park | Rimrock Open Space          |
| Lions Park               |                             |
| Pinewood Lake            |                             |



[www.larimer.org/parks](http://www.larimer.org/parks)



Parks and Open Lands Department  
1800 South County Road 31  
Loveland, CO 80537  
(970) 679-4570

## THE BLUE SKY TRAIL

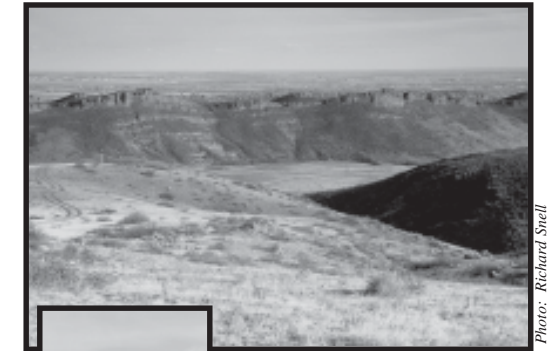


Photo: Richard Stiel



Photo: Greg Good

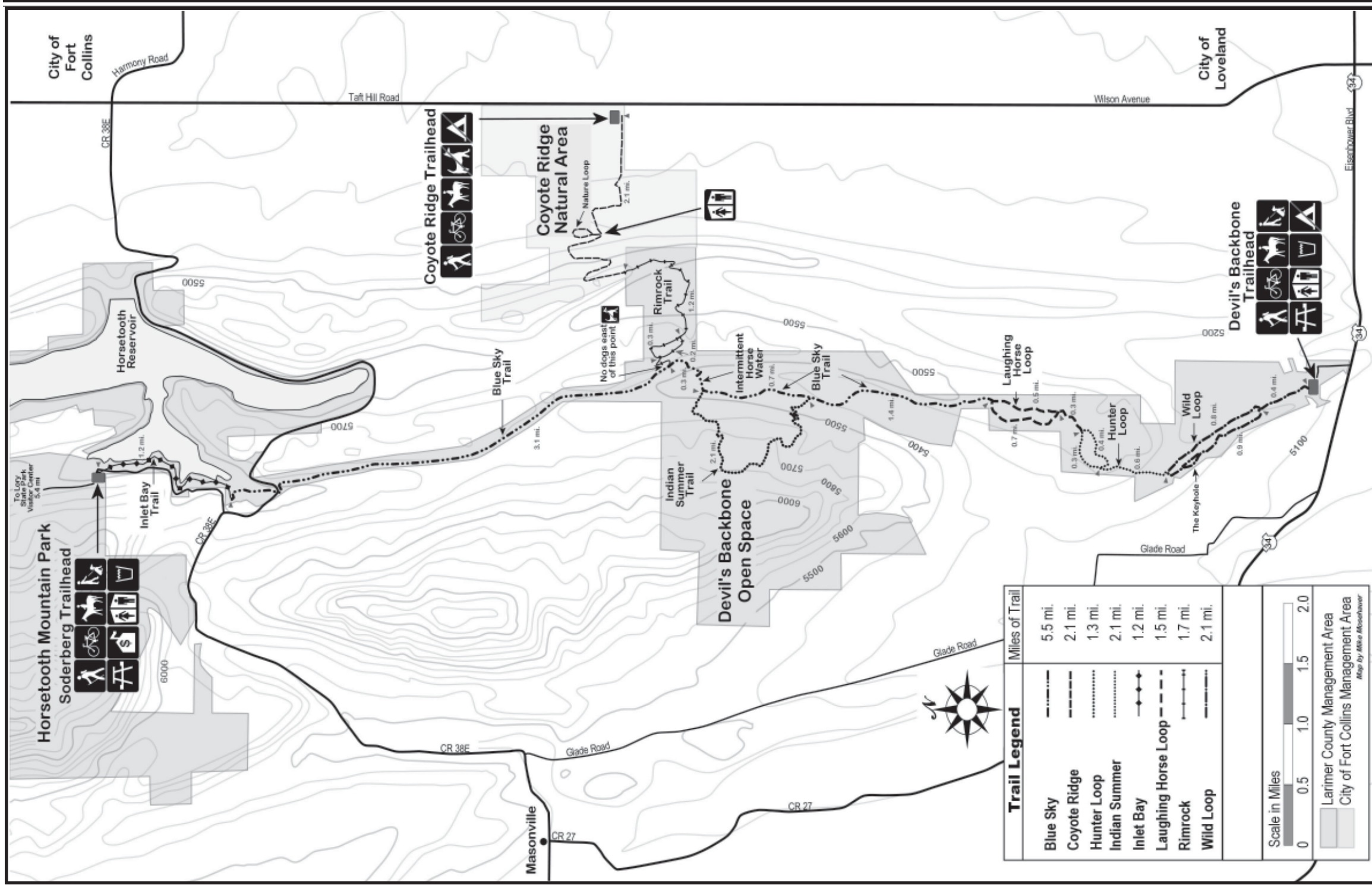


Photo: Richard Stiel



Photo: Greg Good

Welcome to Larimer County’s  
Parks and Open Lands . . .



Trail Legend	Miles of Trail
Blue Sky	5.5 mi.
Coyote Ridge	2.1 mi.
Hunter Loop	1.3 mi.
Indian Summer	2.1 mi.
Inlet Bay	1.2 mi.
Laughing Horse Loop	1.5 mi.
Rimrock	1.7 mi.
Wild Loop	2.1 mi.

Scale in Miles

0 0.5 1.0 1.5 2.0

Larimer County Management Area  
 City of Fort Collins Management Area  
Map by ARS & Associates

**Devil's Backbone Trailhead-to-Trailhead Mileage**

Devil's Backbone to Coyote Ridge ~ 8.8 miles  
 Devil's Backbone to Soderberg ~ 9.6 miles  
 Devil's Backbone to Lory State Park Visitor Center ~ 15.0 miles

**Soderberg Trailhead-to-Trailhead Mileage**

Soderberg to Coyote Ridge ~ 7.8 miles  
 Soderberg to Devil's Backbone ~ 9.6 miles  
 Soderberg to Lory State Park Visitor Center ~ 5.4 miles

**Coyote Ridge Trailhead-to-Trailhead Mileage**

Coyote Ridge to Soderberg ~ 7.8 miles  
 Coyote Ridge to Devil's Backbone ~ 8.8 miles  
 Coyote Ridge to Lory State Park Visitor Center ~ 13.2 miles