

* TRIVIA *

How much do you know about YOUR community?

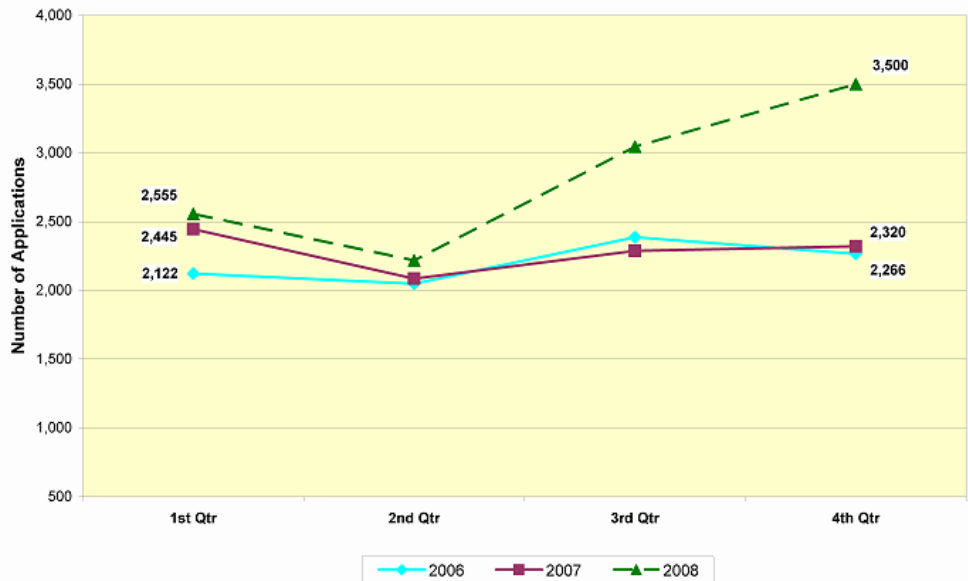
(All answers can be found on the [Compass](#) website!)

1. There are 3 ozone monitors in Larimer County. Where are they located?
2. What was the average cost of a rental unit in Larimer County in 2008?
3. How much did TANF applications increase from January 2008 through December 2008?
4. What is the name of the wind farm that produces most of the wind energy purchased in Larimer County?
5. Did Poudre School District 6th graders score higher or lower than the state average on the CSAP Reading test in 2008?
6. Where there more or less foreclosure filings in 2008 than in 2007? How did that affect the foreclosure filing rate?
7. What is the county's Median Family Income in 2009?

(Answers on page 2)

* COMPASS SPOTLIGHT *

Food Stamp Applications
Larimer County, 2006-2008



As the local economy has worsened, the number of Larimer County residents seeking Food Stamp assistance has grown dramatically. Unfortunately, it doesn't appear to be abating as the number of applications has grown 62% in April 2008, compared to April 2007. See [Food Stamps](#) for more information.

* VOLUNTEERS WANTED *

Are you, or do you know someone who is, an expert in one of the following areas: education, public health, real estate, law enforcement, environmental science, or business? COMPASS of Larimer County is exploring the possibility of developing an informal advisory committee to help ensure the timeliness and accuracy of the COMPASS website.

Please contact Deborah Campbell, at (970) 498-6877 or by email at dcampbell@larimer.org if interested.

Subscribe to the Compass eNewsletter

To subscribe to the quarterly Compass eNewsletter, go to www.larimer.org/compass/newsletter and submit your email address.

Trivia Answers & Highlights

All information is for Larimer County unless otherwise noted.

1. In RMNP, on La Porte Avenue near Horsetooth Reservoir, and on Mason St near CSU. See [Air Quality](#).
2. \$760 per month, \$2 more than in 2007. See [Affordable Rental Costs](#).
3. There were 189 applications in January 2008 and 287 applications in December 2008, representing a 52% increase for the year. See [TANF](#).
4. The Medicine Bow Wind Project, located in south central Wyoming, between Laramie and Rawlins. See [Wind Energy Consumption](#).
5. PSD 6th graders did better on the 2008 CSAP Reading test than the average Colorado 6th grader (84.0% of PSD students scored proficient or advanced vs. 71.1% for the state). See [CSAP Scores](#).
6. There were slightly more foreclosure filings in 2008 (1,587 vs. 1,577 in 2007), however the foreclosure filing rate (per 1,000) went down slightly (14.2 in 2008, versus 14.3 in 2007) because of the increased population. See [Bankruptcy and Foreclosure](#).
7. Larimer County's Median Family Income in 2009 is \$75,200, an increase of \$200 from 2008. See [Median Family Income](#).

Compass Volunteer Program

We are in the process of recruiting a volunteer(s) to help us develop a strong marketing plan for the COMPASS program. We believe we have a great deal to offer the community and would like to spread the word. Of course, we need to do this on a limited budget, so that's where you come in! If you have a marketing background and would enjoy developing our plan, please contact Deborah Campbell at dcampbell@larimer.org.

NEW REPORTS

Three new reports have been added recently to the COMPASS website on the status of Larimer County's:

- [Affordable Housing](#)
- [Health/Mental Health Care Systems](#)
- [Household Food Supply](#)

Several more reports are under development, so check back soon.

Recently Updated Pages:

- [Adoptions](#)
- [Affordable Rental Costs](#)
- [Agriculture in Larimer County](#)
- [Air Quality](#)
- [Bankruptcy and Foreclosure](#)
- [CCAP](#) (Child Care Assistance Program)
- [CSAP Scores](#)
- [Federally Subsidized Housing](#)
- [Food Stamps](#)
- [Marriage and Divorce Rates](#)
- [Median Family Income](#)
- [Residential Home Sales](#)
- [Substance Abuse Treatment](#)
- [TANF](#) (Temporary Assistance to Needy Families)
- [Unintentional Injury Mortality](#)
- [Vehicle Registration](#)
- [Veterans](#)
- [Voter Participation](#)
- [Wind Energy Consumption](#)

What's Missing?

Please help us make the COMPASS of Larimer County website a better source of local information by telling us what is missing. Have you been searching for data on Larimer County and come up empty? If so, we'd love to hear from you! As much as we try to anticipate the needs of the community, it's likely we may have overlooked a critical need or source of information. You can send your ideas to Deborah Campbell at dcampbell@larimer.org.

