

LARIMER COUNTY
DEPARTMENT OF PUBLIC WORKS

PROJECT NO. 5021
BID NO. 10-02
HORSETOOTH RESERVOIR 2010 SOUTH BAY SWIM BEACH PHASE II

ADDENDUM NO. 1

March 12, 2010

The following shall become as fully a part of the above named drawings, specifications, and bid documents as if therein written and shall take full and complete precedence over anything therein contained to the contrary.

Acknowledgment: Each bidder shall indicate on the Proposal form his acknowledgment of this addendum.

Each bidder shall be responsible for reading each item of this addendum to ascertain to what extent and in what manner it affects this work to be performed.

1. Specification Section 07411 Metal Roof Panels – Paragraph 2.6, A.2. - Available manufacturers.
 - a. Add Metal Sales Manufacturing Corporation as an approved substitute. Use “Vertical Seam” panel, 16” wide, 24ga., Felt Green. (Coordinate with 02875 Prefabricated Shelters so that roofing on all structures match)
2. Specification Section 02875 Prefabricated Shelters – Paragraph 2.4, A. - Available manufacturers.
 - a. Add Metal Sales Manufacturing Corporation as an approved substitute. Use “Vertical Seam” panel, 16” wide, 24ga., Felt Green. (Coordinate with 07411 Metal Roof Panels so that roofing on all structures match)
3. Specification Section 10155 Toilet Compartments – Paragraph 2.1, A. - Manufacturers.
 - a. Add Hadrian, Inc. as an approved substitute.
4. Specification Section 08114 Hollow Metal Doors and Frames – Paragraph 2.1, A. - Available manufacturers.
 - a. Add Hollow Metal Xpress as an approved substitute.
5. Sheet E-301 - 1/E-301 Electrical One-Line Diagram And 3/E-301 Sewage Lift Station Power Pedestal Detail.
 - a. “Provide an additional 20A1P GFI Breaker to the Sewage Lift Station Power Pedestal for the 120V circuit to serve the lift station controls and alarms. (The pedestal would then have a total of two 15A2P breakers and two 20A1P GFI breakers)”.

6. Sheet C7 of the Construction Drawings titled "Erosion Control Plan" - Temporary Fence note shall be revised as follows:
 - a. The length of temporary fence shall be approximately 475 LF.

7. Sheet LS101-Day-Use Pads – Note regarding existing picnic areas shall be revised as follows:
 - a. Reconstruction of day-use pads to be by Larimer County. Pads to be salvaged and stored by contractor.

8. Sheet LS101-Propane Tank and Dumpster Area:
 - a. Refer to detail #3 LS501 for pavement thickness, and detail # 9 LS501 for Monolithic Curb drawing. Propane Tank & Installation to be by Larimer County.

9. Sheet LS101 and detail #4-LS504 Perforated Pipe:
 - a. Perforated pipe is approximately 68' in length and to be capped on inflow end. Outflow end of pipe to daylight and remain open.

10. Sheet LS101 Water Fountain/Jug Filler Area:
 - a. Refer to revised Detail #1 on Sheet LS505 attached to this addendum for enlarged plan of this area.

11. Ironsmith Bollard:
 - a. Refer to revised detail #3 on sheet LS505 attached to this addendum for removable bollard base and bollard product.

12. Specification Section 02925 Soil Amendments:
 - a. Refer to attached Specification Section 02925 Soil Amendments for planting area soil prep work.

SECTION 02925 – SOIL AMENDMENT

PART 1 - GENERAL

1.1 RELATED DOCUMENTS

- A. Drawings and general provisions of the Contract, including General and Supplementary Conditions and Division 1 Specification Sections, apply to this Section.

1.2 SUMMARY

- A. Section Includes:
 - 1. Organic Soil Amendments/Planting soil

1.3 DEFINITIONS

- A. Duff Layer: The surface layer of native topsoil that is composed of mostly decayed leaves, twigs, and detritus.
- B. Finish Grade: Elevation of finished surface of planting soil.
- C. Manufactured Topsoil: Soil produced off-site by homogeneously blending mineral soils or sand with stabilized organic soil amendments to produce topsoil or planting soil.
- D. Pests: Living organisms that occur where they are not desired or that cause damage to plants, animals, or people. These include insects, mites, grubs, mollusks (snails and slugs), rodents (gophers, moles, and mice), unwanted plants (weeds), fungi, bacteria, and viruses.
- E. Planting Soil: Standardized topsoil; existing, native surface topsoil; existing, in-place surface soil; imported topsoil; or manufactured topsoil that is modified with soil amendments and perhaps fertilizers to produce a soil mixture best for plant growth.
- F. Subgrade: Surface or elevation of subsoil remaining after excavation is complete, or top surface of a fill or backfill before planting soil is placed.
- G. Subsoil: All soil beneath the topsoil layer of the soil profile, and typified by the lack of organic matter and soil organisms.
- H. Surface Soil: Soil that is present at the top layer of the existing soil profile at the Project site. In undisturbed areas, the surface soil is typically topsoil, but in disturbed areas such as urban environments, the surface soil can be subsoil.

1.4 SUBMITTALS

- A. Product Certificates: For soil amendments and fertilizers, from manufacturer.
- B. Material Test Reports: For existing native surface topsoil and imported or manufactured topsoil.

1.5 QUALITY ASSURANCE

- A. Provide planting soil and organic compost samples to be approved by owner prior to installation.

1.6 DELIVERY, STORAGE, AND HANDLING

- A. Bulk Materials:
 - 1. Do not dump or store bulk materials near structures, utilities, walkways and pavements, or on existing turf areas or plants.

1.7 PROJECT CONDITIONS

- A. Weather Limitations: Proceed with earthwork only when existing and forecasted weather conditions permit installation.

PART 2 - PRODUCTS

2.1 ORGANIC SOIL AMENDMENTS

- A. Compost: A-1 organic compost (Loveland's own); or well-composted, stable, and weed-free organic matter, pH range of 5.5 to 8; moisture content 30 to 50 percent by weight; 100 percent passing through 1/2-inch sieve; soluble salt content of 5 to 10 decisiemens/m; not exceeding 0.5 percent inert contaminants and free of substances toxic to plantings. Organic matter content: 20 to 35 percent of dry weight. CN ratio is to be less than 20:1.

2.2 PLANTING SOILS

- A. Planting Soil: Imported topsoil or manufactured topsoil from off-site sources. Obtain topsoil displaced from naturally well-drained construction or mining sites where topsoil occurs at least 4 inches (100 mm) deep; do not obtain from agricultural land, bogs or marshes.
 - 1. Additional Properties of Imported Topsoil or Manufactured Topsoil: Screened and free of stones 3/4 inch (19 mm) or larger in any dimension; free of roots, plants, sod, clods, clay lumps, pockets of coarse sand, paint, paint washout, concrete slurry, concrete layers or chunks, cement, plaster, building debris, oils, gasoline, diesel fuel, paint thinner, turpentine, tar, roofing compound, acid, and other extraneous materials harmful to plant growth; free of obnoxious weeds and invasive plants including quackgrass, Johnsongrass, poison ivy, nutsedge, nimblewill, Canada thistle, bindweed, bentgrass, wild garlic, ground ivy, perennial sorrel, and brome grass; not infested with nematodes, grubs, other

pests, pest eggs, or other undesirable organisms and disease-causing plant pathogens; friable and with sufficient structure to give good tilth and aeration. Continuous, air-filled, pore-space content on a volume/volume basis shall be at least 15 percent when moisture is present at field capacity. Soil shall have a field capacity of at least 15 percent on a dry weight basis.

2. Mix imported topsoil or manufactured topsoil with the following soil amendments and fertilizers in the following quantities to produce planting soil:
 - a. Ratio of Loose Compost to Topsoil by Volume: 1:4.
 - b. Weight of Lime per 1000 Sq. Ft. (92.9 Sq. m): Per agricultural soil test results.
 - c. Weight of Iron Sulfate per 1000 Sq. Ft. (92.9 Sq. m): Per agricultural soil test results.
 - d. Weight of Agricultural Gypsum per 1000 Sq. Ft. (92.9 Sq. m): Per agricultural soil test results.

PART 3 - EXECUTION

3.1 EXAMINATION

- A. Examine areas to receive plants for compliance with requirements and conditions affecting installation and performance.
 1. Verify that no foreign or deleterious material or liquid such as paint, paint washout, concrete slurry, concrete layers or chunks, cement, plaster, oils, gasoline, diesel fuel, paint thinner, turpentine, tar, roofing compound, or acid has been deposited in soil within a planting area.
 2. Do not mix or place soils and soil amendments in frozen, wet, or muddy conditions.
 3. Suspend soil spreading, grading, and tilling operations during periods of excessive soil moisture until the moisture content reaches acceptable levels to attain the required results.
 4. Uniformly moisten excessively dry soil that is not workable and which is too dusty.
- B. Proceed with installation only after unsatisfactory conditions have been corrected.
- C. If contamination by foreign or deleterious material or liquid is present in soil within a planting area, remove the soil and contamination as directed by COR and replace with new planting soil.

3.2 PREPARATION

- A. Protect structures, utilities, sidewalks, pavements, and other facilities and turf areas and existing plants from damage caused by planting operations.
- B. Install erosion-control measures to prevent erosion or displacement of soils and discharge of soil-bearing water runoff or airborne dust to adjacent properties and walkways.

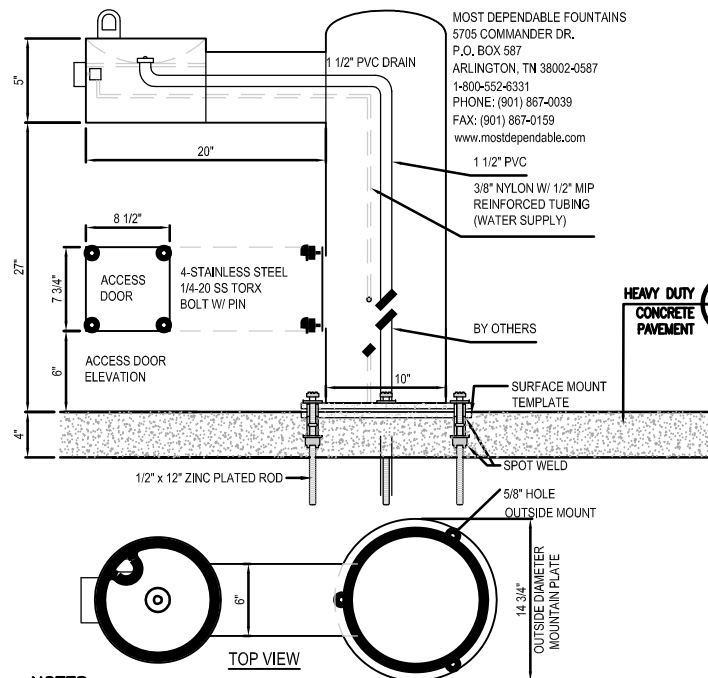
3.3 PLANTING AREA SOIL PLACEMENT

- A. Loosen subgrade of planting areas to a minimum depth of 8 inches (200 mm). Remove stones larger than 1 inch (25 mm) in any dimension and sticks, roots, rubbish, and other extraneous matter and legally dispose of them off Owner's property.
 - 1. Spread planting soil to a depth of 8 inches (200 mm) but not less than required to meet finish grades after natural settlement. Do not spread if planting soil or subgrade is frozen, muddy, or excessively wet.
 - a. Spread approximately one-half the thickness of planting soil over loosened subgrade. Mix thoroughly into top 4 inches (100 mm) of subgrade. Spread remainder of planting soil.
- B. Finish Grading: Grade planting areas to a smooth, uniform surface plane with loose, uniformly fine texture. Roll and rake, remove ridges, and fill depressions to meet finish grades.
- C. Before finalizing, obtain Owner's acceptance of finish grading; restore planting areas if eroded or otherwise disturbed after finish grading.

3.4 CLEANUP AND PROTECTION

- A. Promptly remove soil and debris created by soil installation work from paved areas. Clean wheels of vehicles before leaving site to avoid tracking soil onto roads, walks, or other paved areas.
- B. Erect temporary fencing or barricades and warning signs as required to protect newly soiled areas from traffic. Maintain fencing and barricades throughout initial maintenance period and remove after plantings are established.

END OF SECTION 02925



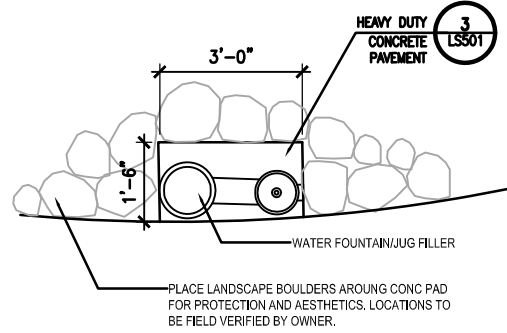
MOST DEPENDABLE FOUNTAINS
5705 COMMANDER DR.
P.O. BOX 587
ARLINGTON, TN 38002-0587
1-800-552-6331
PHONE: (901) 867-0039
FAX: (901) 867-0159
www.mostdependable.com

- NOTES:
1. MEETS ADA REGULATIONS.
2. DO NOT SCALE DRAWINGS.
3. OPTIONAL STAINLESS STEEL SURFACE CARRIER RECOMMENDED.
4. INSTALLATION TO BE COMPLETED IN ACCORDANCE WITH MANUFACTURER'S SPECIFICATIONS.

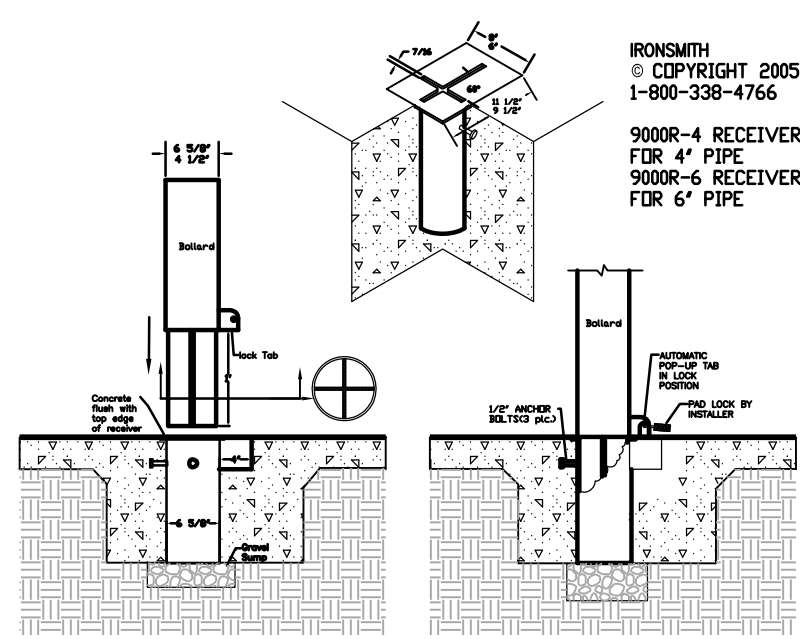
MODEL 410 SM

1 WATER FOUNTAIN/JUG FILLER-ADD ALTERNATE #5
SCALE: NTS

DT-FOUNTAIN



PLAN: NOT TO SCALE



IRONSMITH
© COPYRIGHT 2005
1-800-338-4766

9000R-4 RECEIVER FOR 4' PIPE
9000R-6 RECEIVER FOR 6' PIPE

This drawing embodies a confidential proprietary design of IRONSMITH Palm Desert, CA. All design, manufacturing, reproduction, use, sale, and other rights regarding the same are expressly reserved. This drawing is submitted under confidential relationship for a specific purpose and the recipient agrees by accepting this drawing not to supply or disclose any information regarding it to any unauthorized person or to incorporate any special feature peculiar to this design in other projects. The information disclosed in this drawing may be covered completely or in part by patents pending. Designers may incorporate this drawing in their plans for the purpose of showing design intent. This drawing is not to be used for the purpose of product production.

receiver has 1/2" maximum slot opening for pedestrian safety when bollard is removed.

Lock tab automatically drops below grade when bollard is removed.

Gravel base is recommended for drainage.

Concrete profile and sump depth to be determined by installer based on site conditions.

Lock tab opening must be kept clear protect with tape during concrete pour.

Bollard color to be coordinated and approved by owner.

PHOENICIAN

REMOVABLE PIPE BOLLARDS

- BOLLARD CAPS ARE CAST ALUMINUM FROM RECYCLED MATERIAL
- CAPS ARE FACTORY MOUNTED TO PIPE
- PIPE IS SCHEDULE 40. HEAVY WALL PIPE AVAILABLE ON REQUEST
- CAN BE FINISHED IN A RANGE OF FINISHES AND COLORS OR SUPPLIED UNFINISHED TO PAINT ON SITE
- FOR USE WITH IRONSMITH LOCK TAB RECEIVERS

IRONSMITH BOLLARDS
FOR LANDSCAPE ARCHITECTURE (800) 338-4766

3 REMOVEABLE BOLLARD
SCALE: NTS

DT-Bollard_Removable

Pilot Rock Park • Street • Camp Site Products Call Us Today 800-762-5002

New Products | How to Place an Order | GSA Contracts | About Us | Price List | Internet Specials | Home

Large Group Grills . . .

Contact Us

- Request a Catalog
- Request a Price Quotation

Park Grills

- Campfire Rings
- Picnic Tables
- Park & Street Benches
- Trash & Recycling Receptacles
- Bike Racks & Parking
- Wheelchair Accessible Products
- 100% Recycled Plastic Products
- Site Amenities

Select a Bulletin

N3-2460 Series Large Group Grills:

- Model N3-2460 BB group grill provides 1140 total sq. inches of cooking area on 3 grate surfaces.
- Firebox measures 24" x 60" x 10" high sides, constructed of 3/16" thick steel plate, rib reinforced to prevent box warpage.
- Cooking grate adjusts to 4 levels above the fire, is not removable from the firebox, and includes dual protective coiled steel bar handle grips at both ends.
- Cooking grate is constructed of 5/8" dia. perimeter bars and 1/2" dia. grate bars. Includes 1" wide steel full-length support brace under front edge of grate to prevent deformation.
- Cooking grate is constructed of 5/8" dia. perimeter bars and 1/2" dia. grate bars. Includes 1" wide steel full-length support brace under front edge of grate to prevent deformation.
- Total grate area is divided into three cooking chambers and is supported by four 3/16" thick steel panels.
- Base post is 6" OD heavy wall steel pipe with a 3/8" x 10" square base plate for surface installation. Four 1/2" x 6" J-bolt anchors for a new concrete footing are included.
- Continuous 360 degree rotation on theft proof swivel attachment.
- Finished with high temp non toxic black enamel paint.
- Optional: embedded base post to replace bolt down base plate.

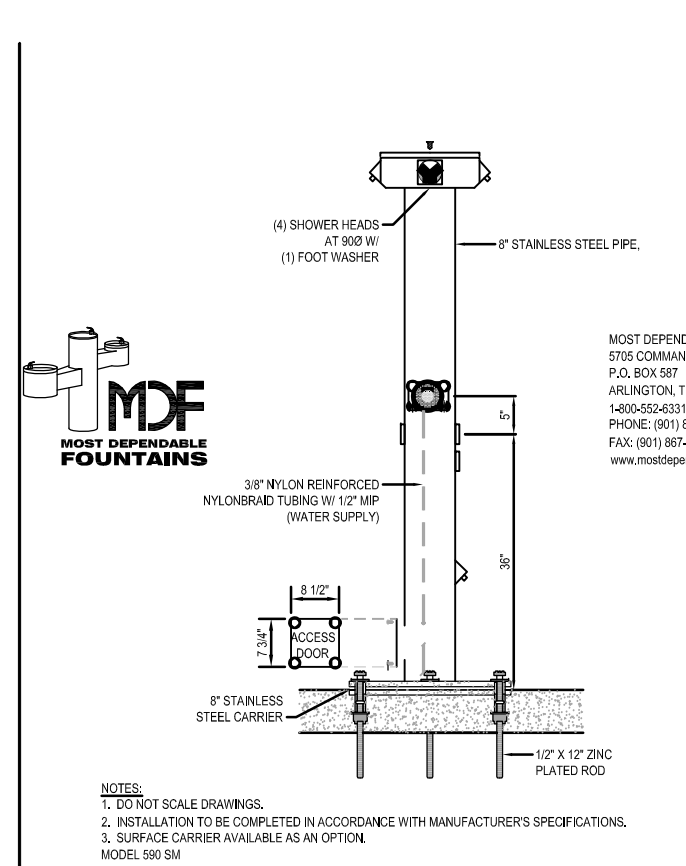
Model N3-2460 BB large group or shelterhouse grill.

Model N3-2460

Overall Dimensions (DxWxH) 24" x 60" x 10"
Cooking Area (Sq. In.) 1140
No. of Grates (3)
Vertical Grate Adjustment from Bottom of Firebox 3-1/2", 5-1/2", 7" and 8-3/4"
Weight 289 lbs.
Optional Shelf None
Base Options B8 (standard) B16 (embedded)

LOOK UP PRICE

2 GRILL
SCALE: NTS FILENAME



MOST DEPENDABLE FOUNTAINS
5705 COMMANDER DR.
P.O. BOX 587
ARLINGTON, TN 38002-0587
1-800-552-6331
PHONE: (901) 867-0039
FAX: (901) 867-0159
www.mostdependable.com

- NOTES:
1. DO NOT SCALE DRAWINGS.
2. INSTALLATION TO BE COMPLETED IN ACCORDANCE WITH MANUFACTURER'S SPECIFICATIONS.
3. SURFACE CARRIER AVAILABLE AS AN OPTION.
MODEL 590 SM

4 OUTDOOR SHOWER PEDESTAL
SCALE: NTS DT-SHOWER

COMPUTER INFORMATION		REVISIONS		LARIMER COUNTY ENGINEERING DEPARTMENT 200 WEST OAK, SUITE 3000 POST OFFICE BOX 1190 FORT COLLINS, COLORADO 80522-1190 (970)498-5700 (970)498-7986 FAX	AS CONSTRUCTED	HORSETOOTH RESERVOIR SWIM BEACH SHEET TITLE SITE DETAILS/PRODUCT INFORMATION	PROJECT NO.
CREATION DATE:	February 19, 2010	(R-1)	BID SET - NOT FOR CONSTRUCTION		NO REVISIONS:		09030070.01
MODIFICATION DATE:	March 11, 2010	(R-2)	DETAIL #1 REVISION-MARCH, 11,2010	REVISED:			
FILE LOCATION:	\\09030070.01\CAD\Sheets	(R-3)		VOID:			
FILE NAME:	LS505.dwg	(R-4)					
		(R-5)				SHEET NO.	LS505

EDAW | AECOM